



## LIMITED LIFETIME WARRANTY

Compass Manufacturing International warrants to the original consumer purchaser that the faucet be free from defects in material and workmanship for as long as the original consumer purchaser owns the home in which the faucet was first installed.

In the event that Freendo faucets are used in a Commercial Application, this warranty is limited for a period of 5 years, unless otherwise specifically stated in the catalog and/or price book.

Compass Manufacturing International will replace, free of charge, during the applicable warranty period, any part or finish that proves defective in material and/or workmanship under normal installation, use and service. This warranty shall not apply to goods which have been subject to accidents, negligence or improper installation. Compass Manufacturing International will not be liable for other damages or losses, including, but not limited to: labor charges and/or damages incurred in installation, repair or replacement as well as any other kind of loss or damage. Proof of purchase from the original consumer purchaser must be made available for all warranty claims.

Compass Manufacturing International recommends using a professional plumber for all installation and repair. Compass Manufacturing International will, at its discretion, provide new or equivalent replacement parts for any product that proves to be defective under normal usage and service. Replacement parts may be obtained by emailing the address below, calling the number below or by writing to:

### Compass Manufacturing International

Freendo Product Service  
6702 Enterprise Drive  
Louisville, KY 40214  
800.626.3525  
[warranty@cmiproduct.com](mailto:warranty@cmiproduct.com)

Revised 10/25/23

[warranty@cmiproduct.com](mailto:warranty@cmiproduct.com)

© Compass Manufacturing International



Model No. : 482-8090



**Pull-Down Kitchen Faucet with  
Waterfall Function**



## Helpful Information

### Tools:

Gather the necessary tools as shown below to complete the installation of this faucet. Some may not be needed depending on the model of faucet you are installing.



Plumber's Putty  
and/or Silicone



Flashlight



Basin Wrench



Safety Glasses



Phillips  
Screwdriver



Pliers



Channel Locks



Adjustable Wrench

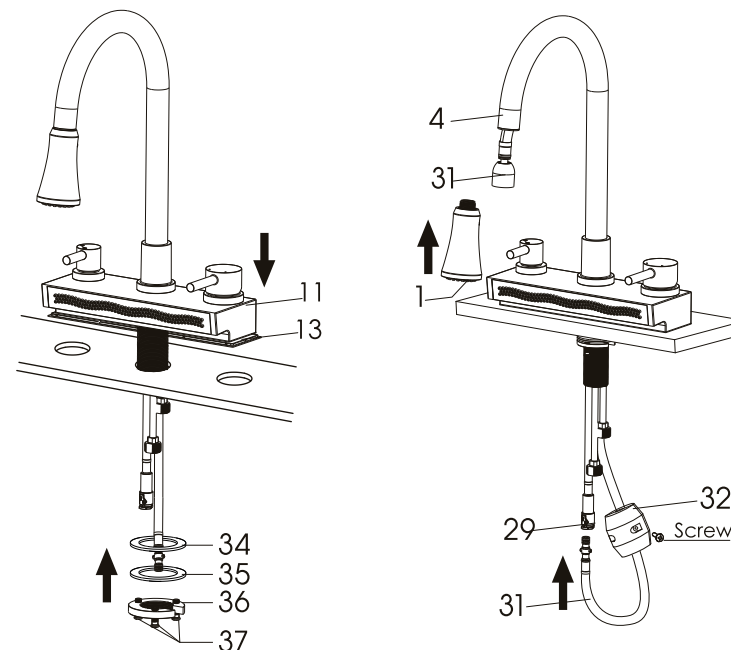
# 4

## Parts List

No.	Part Name
1	Spray Head
2	Check Valve
3	Spout Sleeve
4	Spout
5	Wearing Ring
6	O-rings
7	Connector
8	O-rings
9	Wearing Ring
10	Adapter
11	Deck Plate
12	Brazed Underbody
13	Gasket
14	Cartridge
15	Lock Nut
16	Trim Cap
17	Handle
18	Handle Buttons
19	Allen Wrench
20	Diverter
21	Lock Nut
22	O-ring
23	Trim Cap
24	Handle
25	Set Screws
26	O-rings
27	Waterfall Panel
28	Set Screws
29	Quick Connect Assembly
30	Check Valve
31	Pull-out Hose
32	Weight
33	Shank
34	Washer
35	Metal Washer
36	Lock Nut
37	Screws

# 1

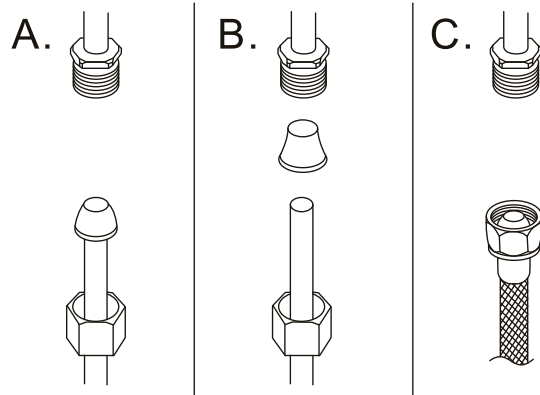
## Faucet Installation



1. Position the faucet, deck plate (#11) and gasket (#13) on the sink or countertop as shown. Install the faucet through the center hole from the left.
2. From underneath the countertop, assemble washer (#34), metal washer (#35), and lock nut (#36). Tighten the lock nut (#36) by hand and secure the screws (#37) with a Phillips screwdriver.
3. Remove the screw from the weight (#32). Insert the hose (#31) into the groove of the weight (#32) at the lowest point on the downward side of the hose (#31) and reinstall the screw. Attach the hose (#31) to the quick connect assembly (#29). The hose (#31) is fully connected when you hear a light click or popping sound. Note: Do not remove the reminder tag with the quick connect assembly (#29) instructions.
4. Connect supply lines to water supply valve (supply valves and supply lines are not included).  
CAUTION: DON'T OVER TIGHTEN THE SUPPLY LINES. OTHERWISE IT MAY DAMAGE THE WASHERS AND NUTS OF THE SUPPLY LINES AND THIS COULD CAUSE THEM TO LEAK.
5. Remove spray head (#1) from the faucet and flush water through faucet to remove any debris.
6. Replace spray head (#1) and run water through the faucet to check for leaks at all of the connections.

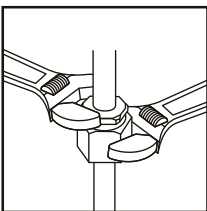
## 2

### Configuration



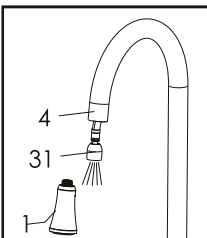
**Warning:**  
The supply valves and  
supply lines are not  
included.

Connect to water supply lines with either:  
(A) 3/8" O.D. Copper tubing (ball nose risers with the coupling  
nuts) or;  
(B) 3/8" Copper tubing (no ball) with supplied tube head interior  
connector or;  
(C) IPS faucet connectors (1/2")



#### Important:

Tighten connection with two wrenches to prevent damage to tube body. Be careful not to bend the stem as this will void the product warranty.



#### Important:

Unscrew the spray head (#1) from the hose (#31). Hold the hose (#31) in the sink to avoid spraying water out of the sink. Turn on the water and let it run for one minute. This will help clear any debris that may have come loose during installation and prevent the system from becoming clogged. Turn off the water, screw the spray head (#1) onto the hose (#31).

## 3

### Parts Diagram

