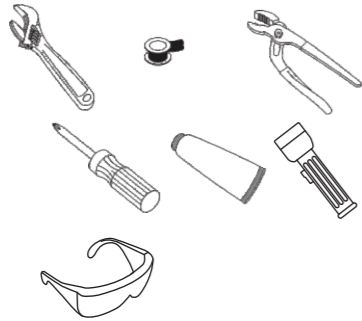


Installation

Parts Diagram / List

Tools

- Adjustable Wrench (2)
- Teflon Tape
- Groove Joint Pliers
- Phillips Screwdriver
- Silicone Sealant
- Flashlight
- Safety Glasses



Maintenance

Your new glass rinser is designed for years of trouble-free performance. Keep it looking new by cleaning it periodically with a soft damp cloth. Avoid abrasive cleaners, steel wool, and harsh cleaners as these will dull the finish and void the warranty. Vinegar is suggested as an alternative cleaner and is safe for all finishes.

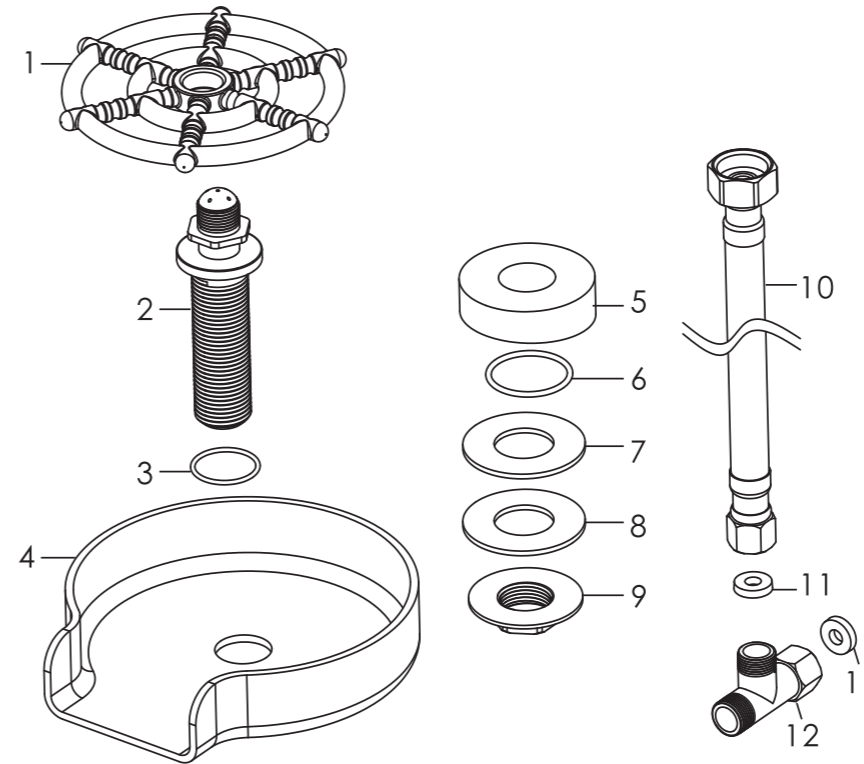
Safety Tips

- Safety glasses should always be worn when cutting or soldering.
- Always cover your drain before installation to prevent losing parts.

Important Points

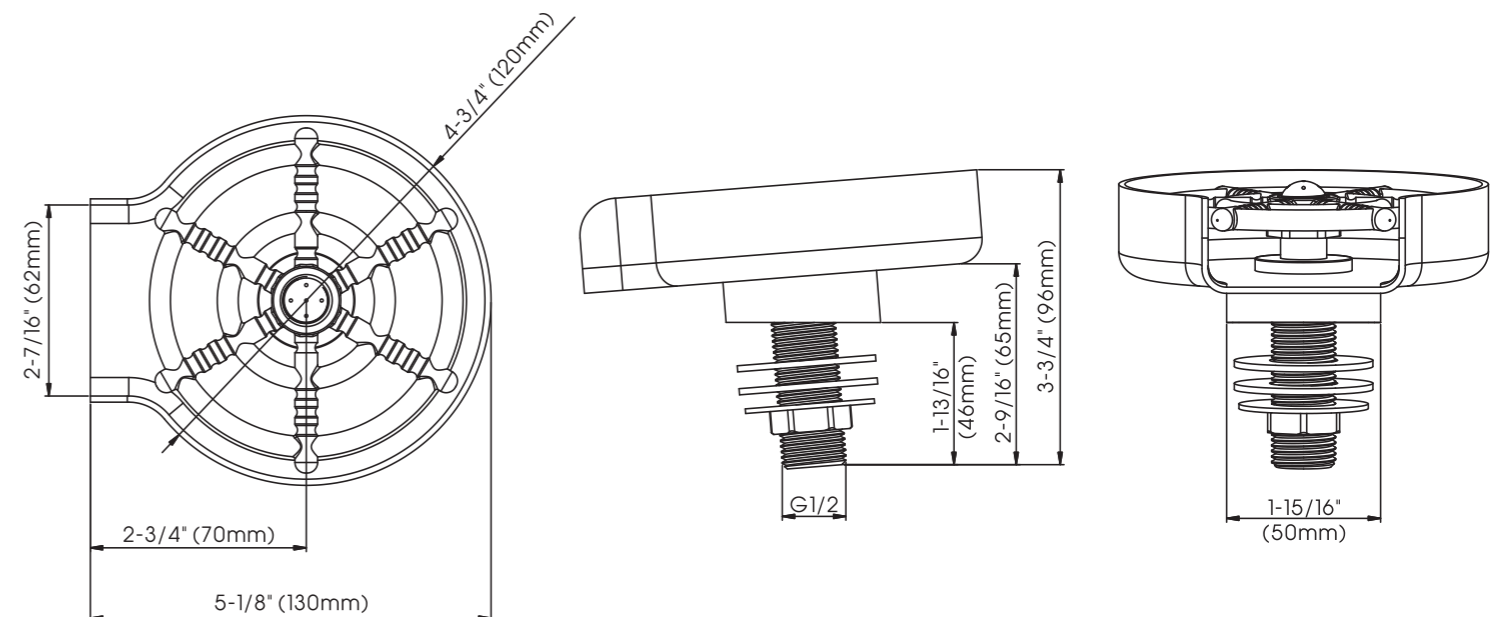
- Before the installation turn off the cold and hot water shutoffs.
- Before installing the water supply lines to the new glass rinser, turn on both water supply valves and bleed the water supply lines into a bucket for one minute to remove any debris that could clog the glass rinser.
- Wrap ALL threaded connections with Teflon tape on a clockwise direction.
- When installing the new glass rinser, turn the connectors finger tight, then use 2 adjustable wrenches (using one to anchor the tube) to tighten the connectors. Connections that are too tight will reduce the integrity of your system.
- If you are using compression fittings, Teflon tape is not needed.

GLASS RINSER



No.	Part Name
1	Actuator
2	Center Post
3	O-ring
4	Base
5	Angled Spacer
6	O-ring
7	Rubber Washer
8	Metal Washer
9	Mounting Nut
10	Glass Rinser Braided Water Supply Hose
11	Rubber Gasket
12	Extender Tee

Rough-in



Need Help

Have a question? DON'T GO BACK TO THE STORE, WE CAN HELP just call 1-800-626-3525, 8 a.m. to 5 p.m. EST Monday-Friday or send an email to Help@cmiproduct.com.

Have a question? DON'T GO BACK TO THE STORE, WE CAN HELP just call 1-800-626-3525, 8 a.m. to 5 p.m. EST Monday-Friday or send an email to Help@cmiproduct.com.

Installation Instructions

1. Shut off the water at the supply valves under the sink or at the main water supply. Clean and dry the surface area where the new glass rinser will be mounted. Apply a small bead of silicone around the sink hole opening for the glass rinser.

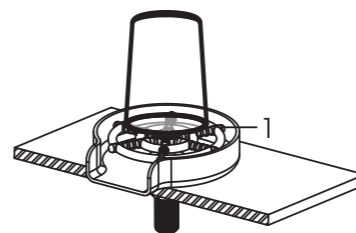
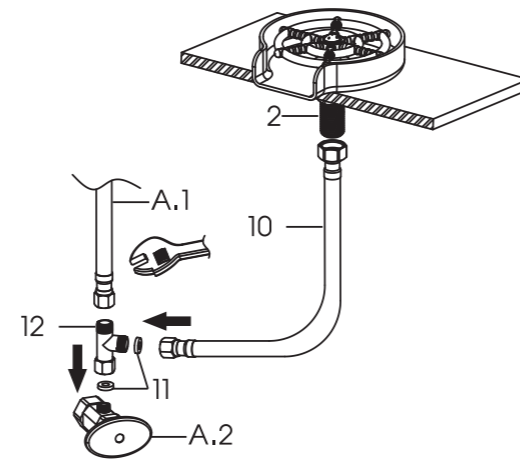
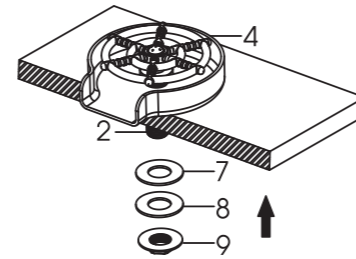
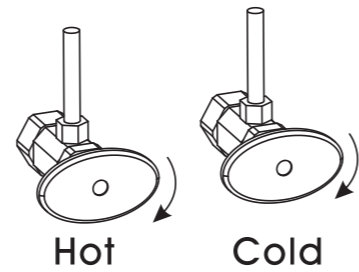
2. From underneath the sink, secure the base (#4) to the sink by sliding the rubber washer (#7) and metal washer (#8) onto the center post (#2), and then threading the mounting nut (#9) onto the center post (#2). Ensure the base (#4) is aligned with the sink and the water outlet extends into the sink prior to fully tightening the mounting nut (#9).

3. Determine whether the glass rinser will be supplied by cold or hot water. Unthread the faucet supply line (A.1) from the water supply valve (A.2) on the chosen side. Insert the extender tee (#12) between the faucet supply line (A.1) and the water supply valve (A.2). Place the rubber gasket (#11) inside the inlet on the extender tee (#12) before connecting it to the water supply valve (A.2). Attach one end of the glass rinser braided water supply hose (#10) to the extender tee (#12).

Place the remaining end of the glass rinser braided water supply hose (#10) in a bucket. Open the supply valve to turn on the water. Run the water uninterrupted for about 30 seconds to remove any residue from the lines. Turn off the water supply.

Attach the open end of the glass rinser braided water supply hose (#10) to the center post (#2). Tighten with a wrench. Do not over tighten.

4. Once the installation is complete, turn on the water supply. Test the glass rinser by placing a glass upside down over the glass rinser and pressing down on the actuator (#1). Check for leaks. If a leak occurs, gently tighten the nut on the connection that is leaking.



Troubleshooting

If the installation instructions have been followed carefully and the glass rinser still does not work properly, take these corrective steps.

Problem	Cause	Action
Rinsers leaks underneath the base or through the hole in the sink.	The rubber o-ring (#6) is not installed or not installed properly on the center post (#2).	<ol style="list-style-type: none"> 1. Shut off the water at the supply valve under the sink or at the main water supply. 2. Disassemble the glass rinser to confirm the rubber o-ring (#6) is in the proper position on the center post. 3. If the o-ring (#6) is missing or damaged, replace the rubber o-ring (#6) by contacting Customer Service for a new one.
Rinsers leaks under the sink.	The hose is not securely connected to the center post or to the extender tee (#12).	<ol style="list-style-type: none"> 1. Shut off the water at the supply valve under the sink or at the main water supply. 2. Gently tighten the connection that is leaking.
	The rubber gasket (#11) is not installed or not installed properly in the extender tee (#12).	<ol style="list-style-type: none"> 1. Shut off the water at the supply valve under the sink or at the main water supply. 2. Disconnect the extender tee (#12) from the water supply valve. 3. Make sure the rubber gasket (#11) is installed in the extender tee (#12). 4. Reconnect the extender tee to the water supply valve and turn the water supply back on. 5. If a leak continues, gently tighten the connection between the extender tee (#12) and the water supply valve. 6. If the leak persists, replace the rubber gasket (#11) by contacting Customer Service for a new one.
Water does not completely shut off.	The center post (#2) does not return to the original "off" position after use.	<ol style="list-style-type: none"> 1. The rubber o-ring (#6) on the center post is missing or damaged. 2. Replace the o-ring (#6) by calling Customer Service for a replacement.
The water flow is low.	The glass rinser braided water supply hose (#10) is clogged.	<ol style="list-style-type: none"> 1. Shut off the water at the supply valves under the sink or at the main water supply. 2. Disconnect the glass rinser braided supply hose (#10) from the glass rinser assembly and flush out any debris into a bucket. 3. Reconnect glass rinser braided supply hose (#10) and turn water supply back on.
	The center post (#2) is damaged.	<ol style="list-style-type: none"> 1. Replace the center post (#2) by calling Customer Service for a replacement.

Lifetime Limited Warranty

The manufacturer warrants that the parts and assemblies of this product will be free from defects in material and workmanship under normal household use for as long as it is owned by the original consumer purchaser.

This warranty covers the original purchaser with original receipt only and does not include business, commercial or industrial use of this product. This warranty shall not apply to goods which have been subject to accidents, negligence or improper installation. Our responsibility under this warranty is limited only to the replacement of parts and no other costs. Should a malfunction occur within the time covered by this warranty, replacement parts may be obtained from the Customer Service Department 1-800-626-3523 or email warranty@cmiproduct.com. The installation by consumer for any parts that prove defective under normal usage and care with new or equivalent parts.

Revised on 10/31/2023