



COMPASS®
MANUFACTURING
INTERNATIONAL



KITCHEN SINKS DESIGNED FOR TODAY'S KITCHENS



 COMPASS[®]
MANUFACTURING
INTERNATIONAL



Brimley

Retrofit Apron Front Farm Sinks

*Includes: Corrosion Resistant Sink Grid(s).
Faucet and Basket Strainer(s) not included.*

Blanchard

Retrofit Apron Front Farm Sink Work Stations

*Includes: Corrosion Resistant Sink Grid(s), Wood
Cutting Board, Drying Rack & Stainless Steel
Colander.*

Faucet and Basket Strainer(s) not included.





 COMPASS[®]
MANUFACTURING
INTERNATIONAL

Brimley

Retrofit Dual-Mount Apron Front Farm Sinks



33"x24"x8"
Flat Front
Model 482-6933
7-1/2" Apron Height
8" Deep 60/40 Double Bowl
18 Gauge



33"x25"x8"
Curved Front
Model 482-6936
8" Apron Height
8" Deep 60/40 Double Bowl
18 Gauge



33"x24"x8"
Flat Front
Model 482-6934
7-1/2" Apron Height
8" Deep Single Bowl
18 Gauge



33"x25"x8"
Curved Front
Model 482-6937
8" Apron Height
8" Deep Single Bowl
18 Gauge



33"x24"x8"
Flat Front
Model 482-6935
7-1/2" Apron Height
8" Deep 50/50 Double Bowl
18 Gauge



33"x25"x8"
Curved Front
Model 482-6938
8" Apron Height
8" Deep 50/50 Double Bowl
18 Gauge

Includes: Corrosion Resistant Grid(s). Not Included: Faucet or Basket Strainer(s).

This series can be purchased with 1, 2, 3 or 4 hole faucet configurations. Ask your sales representative for more information!

www.cmiproduct.com



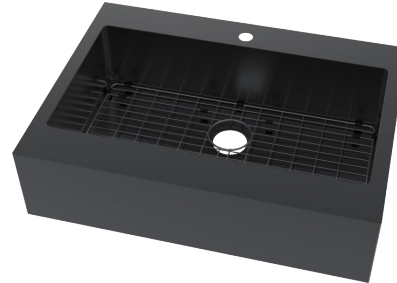
 COMPASS[®]
MANUFACTURING
INTERNATIONAL

Brimley

Retrofit Dual-Mount Black Stainless Steel Apron Front Farm Sinks



33"x24"x8"
Flat Front
Model 482-8023
7-1/2" Apron Height
8" Deep 60/40 Double Bowl
18 Gauge



33"x24"x8"
Flat Front
Model 482-8024
7-1/2" Apron Height
8" Deep Single Bowl
18 Gauge



33"x24"x8"
Flat Front
Model 482-8025
7-1/2" Apron Height
8" Deep 50/50 Double Bowl
18 Gauge

Includes: Corrosion Resistant Grid(s). Not Included: Faucet or Basket Strainer(s).

This series can be purchased with 1, 2, 3 or 4 hole faucet configurations. Ask your sales representative for more information!

www.cmiproduct.com

Blanchard

Retrofit Work Station Dual-Mount Apron Front Farm Sinks



33"x24"x8"

**Flat Front
Work Station**

Model 482-7213

7-1/2" Apron Height
8" Deep Single Bowl
18 Gauge



33"x24"x8"

**Flat Front
Work Station**

Model 482-7216

7-1/2" Apron Height
8" Deep 60/40 Double
Bowl
18 Gauge



33"x24"x8"

**Flat Front
Work Station**

Model 482-7219

7-1/2" Apron Height
8" Deep 50/50 Double
Bowl
18 Gauge



33"x25"x8"

**Curved Front
Work Station**

Model 482-7222

8" Apron Height
8" Deep Single Bowl
18 Gauge



33"x25"x8"

**Curved Front
Work Station**

Model 482-7225

8" Apron Height
8" Deep 60/40 Double
Bowl
18 Gauge

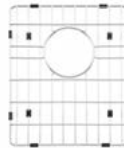
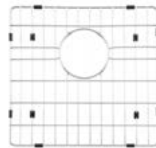


33"x25"x8"

**Curved Front
Work Station**

Model 482-7228

8" Apron Height
8" Deep 50/50 Double
Bowl
18 Gauge

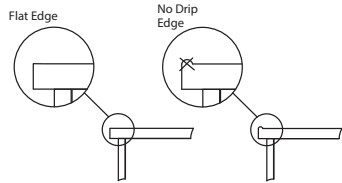
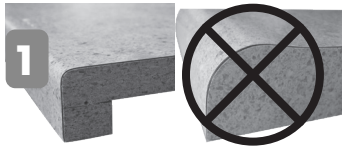


Includes: Corrosion Resistant Grid(s). Not Included: Faucet or Basket Strainer(s).

This series can be purchased with 1, 2, 3 or 4 hole faucet configurations. Ask your sales representative for more information!

www.cmiproduct.com

Retrofit Apron Front Farm Sinks Checklist

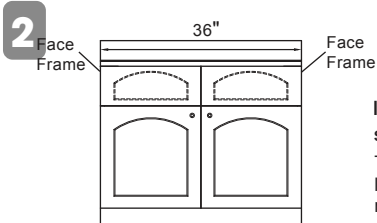


Is your countertop flat?

The counter top must be flat to ensure a proper installation.

Please Note – Countertops with a “no drip” edge will not work with this sink application.

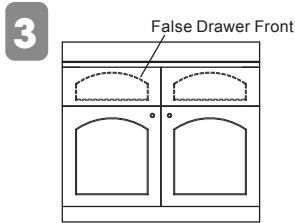
YES NO



Is your sink base cabinet 36” wide?

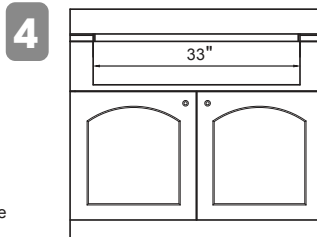
Measure the face frame from the left to the right on your sink base to determine the width.

YES NO



Does your cabinet have false drawer fronts?
(Can be one or two false drawer fronts)

YES NO

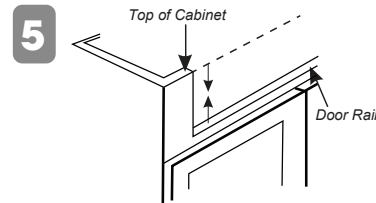


Is the dimension between the cabinet stiles 33”?

This measurement is the open space from left to right when the false drawer front is removed.

Typically, this distance can be measured from the inside of the cabinet without removing the false drawer fronts.

YES NO



Measure the distance from the top of the door rail to the top of the cabinet.

Add 1-1/2” to the measurement to account for the countertop height.

The total will tell you which sink to choose.

Typically, this distance can be measured from the inside of the cabinet.

Measurement

Measurement + 1-1/2”

Total

Total

7-1/2” = Flat Apron Front

8” = Curved Apron Front

Please Note – 7-1/2” Flat Apron Front Sink can be used for an 8” opening by furring out the 1/2” gap (furring not included)

6 If you have answered yes to all of the questions you can choose one of the Retrofit Apron Front Farm Sinks listed on the website for your kitchen.

Before:



After:



Installation Video Online

www.cmiproduct.com

<https://www.youtube.com/watch?v=uB8UFQMfE3Q>

Ruston

Granite Composite Dual-Mount Work Station Sinks



33"x22"x9"
Ruston Sink
Model 132-6983
Dual-Mount - Sand
1 Hole
9" Depth
Large Single Bowl



33"x22"x9"
Ruston Sink
Model 132-7288
Dual-Mount - Grey
1 Hole
9" Depth
Large Single Bowl



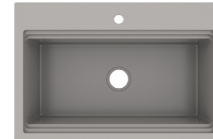
33"x22"x9"
Ruston Sink
Model 132-6984
Dual-Mount - Black
1 Hole
9" Depth
Large Single Bowl



33"x22"x9"
Ruston Sink
Model 132-7289
Dual-Mount - Brown
1 Hole
9" Depth
Large Single Bowl



33"x22"x9"
Ruston Sink
Model 132-7381
Dual-Mount - White
1 Hole
9" Depth
Large Single Bowl



Includes: Corrosion Resistant Grid(s). Not Included: Faucet or Basket Strainer(s).

This series has knockouts for 2 , 3 or 4 hole faucet configurations. Hole saw included.

www.cmiproduct.com



 COMPASS[®]
MANUFACTURING
INTERNATIONAL

CMI FAMILY OF PRODUCTS



Compass Manufacturing International
P. 800.626.3525

info@cmiproduct.com

Browse all of our Products: www.cmiproduct.com

