



## LIMITED LIFETIME WARRANTY

Compass Manufacturing International warrants to the original consumer purchaser that the faucet be free from defects in material and workmanship for as long as the original consumer purchaser owns the home in which the faucet was first installed.

In the event that Freendo faucets are used in a Commercial Application, this warranty is limited for a period of 5 years, unless otherwise specifically stated in the catalog and/or price book.

Compass Manufacturing International will replace, free of charge, during the applicable warranty period, any part or finish that proves defective in material and/or workmanship under normal installation, use and service. This warranty shall not apply to goods which have been subject to accidents, negligence or improper installation. Compass Manufacturing International will not be liable for other damages or losses, including, but not limited to: labor charges and/or damages incurred in installation, repair or replacement as well as any other kind of loss or damage. Proof of purchase from the original consumer purchaser must be made available for all warranty claims.

Compass Manufacturing International recommends using a professional plumber for all installation and repair. Compass Manufacturing International will, at its discretion, provide new or equivalent replacement parts for any product that proves to be defective under normal usage and service. Replacement parts may be obtained by emailing the address below, calling the number below or by writing to:

### Compass Manufacturing International

Freendo Product Service

6702 Enterprise Drive

Louisville, KY 40214

800.626.3525

[warranty@cmiproduct.com](mailto:warranty@cmiproduct.com)

Revised 4/3/17

[warranty@cmiproduct.com](mailto:warranty@cmiproduct.com)

© Compass Manufacturing International

800.626.3525



Model No. : 192-6480	Polished Chrome
192-6481	Brushed Nickel <u>Spotless PVD</u>
192-7167	Matte Black
192-7166	Matte Gold



### Casmir Single Handle Vessel Faucet with Dual Function Pop-up

Single Hole Installation works with overflow  
or no overflow bathroom sinks



## Helpful Information

### Helpful Tools

#### Tools:

Gather the necessary tools as shown below to complete the installation of this faucet. Some may not be needed depending on the model of faucet you are installing.



Plumber's Putty  
and/or Silicone



Flashlight



Basin Wrench



Safety Glasses



Screwdriver



Pliers



Channel Locks



Adjustable Wrench

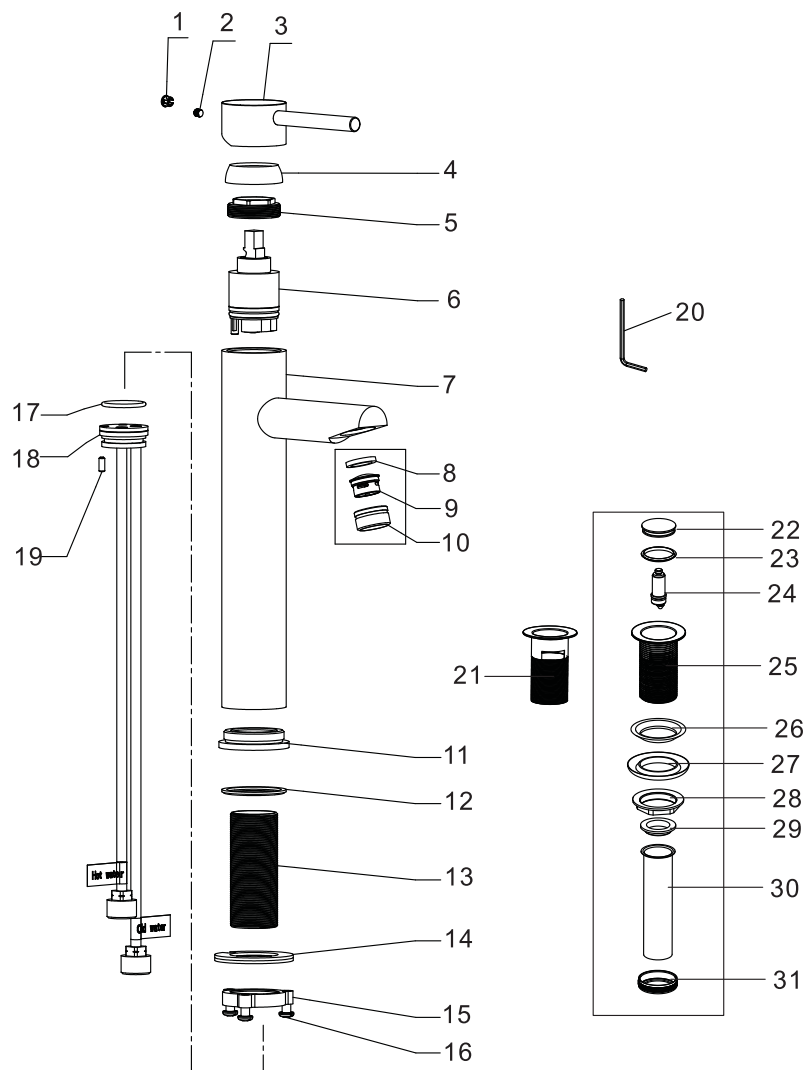
5

## Parts List

31	Nut
30	Outlet Pipe
29	Washer
28	Locknut
27	Washer
26	Washer
25	Stopper Housing(Without Overflow Hole)
24	Stopper Core
23	Washer
22	Cover
21	Stopper Housing(With Overflow Hole)
20	Allen Key
19	Screw
18	Waterway
17	O-ring
16	Screw
15	Locknut
14	Clamp
13	Shank
12	O-ring
11	Base
10	Aerator Collar
9	Aerator Core
8	O-ring
7	Body
6	Cartridge
5	Cartridge Locknut
4	Trim Cap
3	Handle
2	Set Screw
1	Index
No.	Part Name

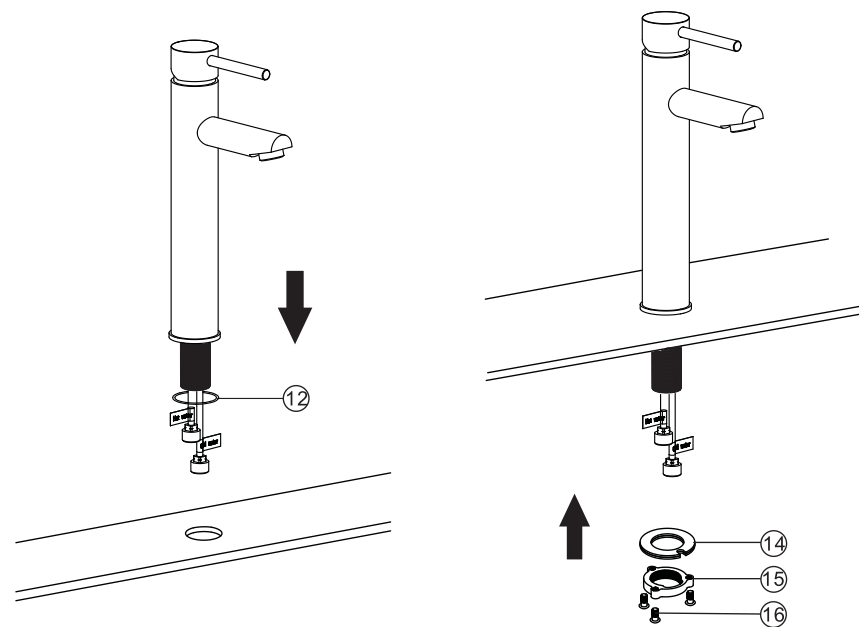
# 4

## Parts Diagram



# 1

## Faucet Installation



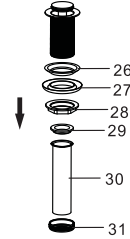
1. Position the faucet in order on the countertop as shown. Don't forget the O-ring 12 .
2. Assemble clamp 14 and locknut 15 to faucet shank by hand and tighten the screws 16 with the screwdriver.

## 2

### Pop-up Installation

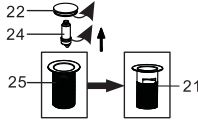
Instruction for product with drain option only

1. Remove old drain assembly. Clean all sink surfaces to remove old putty and dirt before installing new drain. Disassemble new pop-up assembly: remove nut (31), outlet pipe (30), washer (29), locknut (28), washer (27) and washer (26).

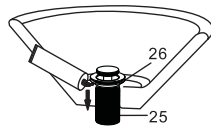


**If the faucet is installed in a sink with overflow, follow step 2. Otherwise, please skip to step 3.**

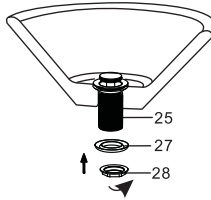
2. Unscrew the cover (22) counterclockwise by hand. Unscrew the stopper core (24) counterclockwise with proper tool. Replace the original stopper housing without overflow hole (25) by the new stopper housing with overflow hole (21). And assemble the stopper core (24), cover (22). Continue to step 3.



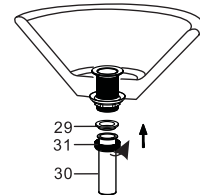
3. Place a ring of silicone sealant around the washer (26) or the drain opening of the sink. Insert stopper housing (25) with washer (26) through the drain hole.



4. Install washer (27) to the stopper housing (25), then hand tighten the locknut (28), but do not over tighten. See diagram for visual.

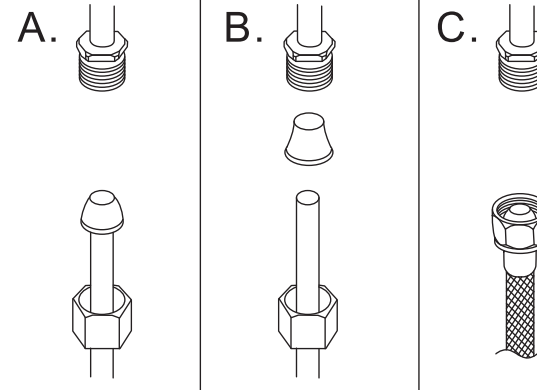


5. Position washer (29) into outlet pipe (30), attach nut (31) onto outlet pipe (30), and then hand tighten nut (31), but do not over tighten. See diagram for visual.  
Hint-Outlet (30) is used to connect to the p-trap drain-please refer to those installation instruction for assembly.



## 3

### Configuration

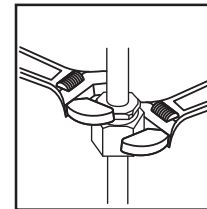


**Warning:**  
The supply valves and supply lines are not included.

Connect to water supply lines with either:

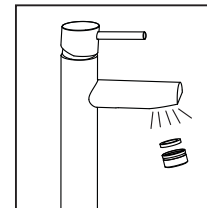
- (A) 3/8 " O.D. Copper tubing (ball nose risers with the coupling nuts or;
- (B) 3/8 " Copper tubing (no ball) with supplied tube head interior connector or;
- (C) IPS faucet connectors (1/2 " )

#### Important:



Tighten connection with two wrenches to prevent damage to tube body. Be careful not to bend the stem as this will void the product warranty.

#### Important:



Let both hot and cold water run for one minute. This will help clean any debris that might clog the system.

**Test system for leaks .**