



Model No. : 192-6635 Polished Chrome



**Wide Spread Gooseneck Lavatory Faucet  
With Wrist Blade Handles**



## Helpful Information

### Helpful Tools

#### Tools:

Gather the necessary tools as shown below to complete the installation of this faucet. Some may not be needed depending on the model of faucet you are installing.



Plumber's Putty  
and/or Silicone



Flashlight



Basin Wrench



Safety Glasses



Screwdriver



Pliers



Channel Locks



Adjustable Wrench



### LIMITED LIFETIME WARRANTY

Compass Manufacturing International warrants to the original consumer purchaser that the faucet be free from defects in material and workmanship for as long as the original consumer purchaser owns the home in which the faucet was first installed.

In the event that Freendo faucets are used in a Commercial Application, this warranty is limited for a period of 5 years, unless otherwise specifically stated in the catalog and/or price book.

Compass Manufacturing International will replace, free of charge, during the applicable warranty period, any part or finish that proves defective in material and/or workmanship under normal installation, use and service. This warranty shall not apply to goods which have been subject to accidents, negligence or improper installation. Compass Manufacturing International will not be liable for other damages or losses, including, but not limited to: labor charges and/or damages incurred in installation, repair or replacement as well as any other kind of loss or damage. Proof of purchase from the original consumer purchaser must be made available for all warranty claims.

Compass Manufacturing International recommends using a professional plumber for all installation and repair. Compass Manufacturing International will, at its discretion, provide new or equivalent replacement parts for any product that proves to be defective under normal usage and service. Replacement parts may be obtained by emailing the address below, calling the number below or by writing to:

#### Compass Manufacturing International

Freendo Product Service

6702 Enterprise Drive

Louisville, KY 40214

800.626.3525

[warranty@cmiproduct.com](mailto:warranty@cmiproduct.com)

Revised 3/22/18

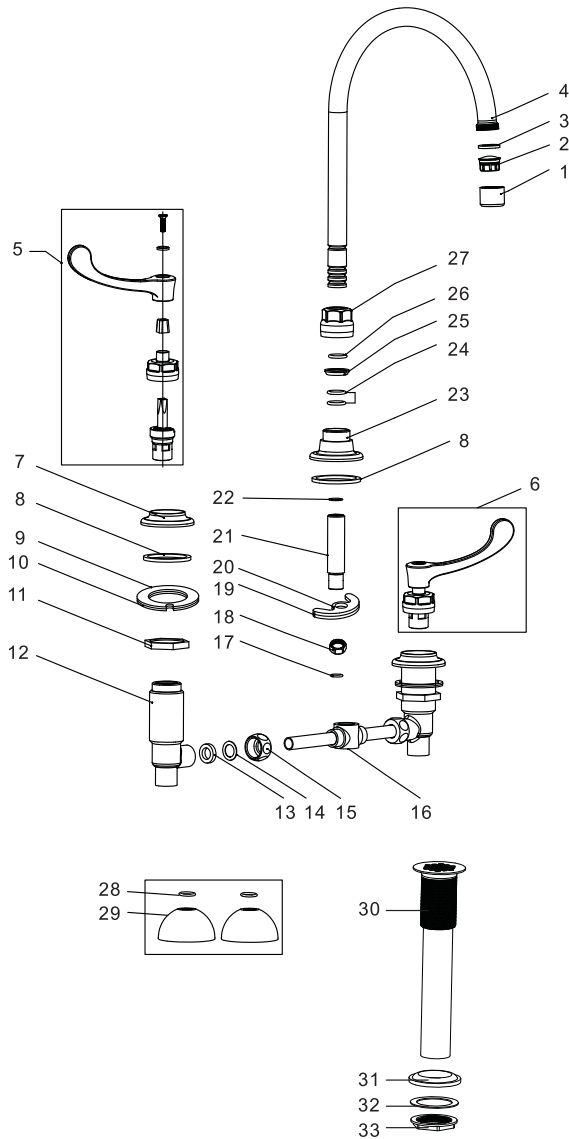
[warranty@cmiproduct.com](mailto:warranty@cmiproduct.com)

© Compass Manufacturing International

800.626.3525

# 4

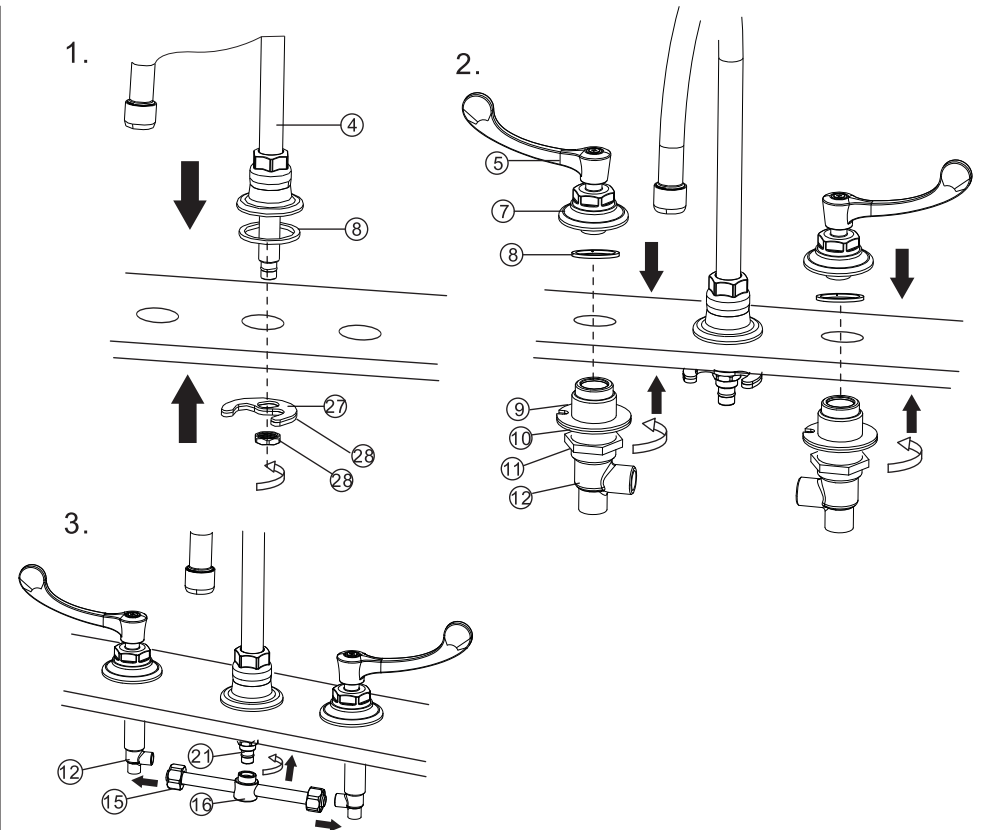
## Parts Diagram / List



No.	Part Name
1	Aerator collar
2	Aerator core
3	O-ring
4	Spout
5	Handle wheel (hot)
6	Handle wheel (cold)
7	Locknut
8	Washer
9	Rubber washer
10	Clamp
11	Locknut
12	Water valve
13	O-ring
14	Washer
15	Locknut
16	Water valve
17	O-ring
18	Locknut
19	Clamp
20	Rubber washer
21	Water way
22	O-ring
23	Spout adaptor
24	O-ring
25	Rubber ring
26	O-ring
27	Locknut
28	O-ring
29	Trim cap
30	Drain body
31	Top rubber washer
32	Bottom rubber washer
33	Locknut

# 1

## Preparation / Mounting

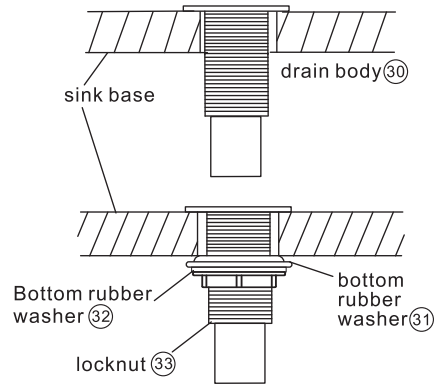


1. Position spout (4) and washer (8) on countertop, from underneath of the countertop, assemble rubber washer (20), clamp (19) and locknut (18), tighten the locknut with basin wrench.
2. Position the handle wheel (5) as shown, and assemble the water valve (12), rubber washer and clamp (10). Tighten the locknut (11) and locknut (7) with a screwdriver. Repeat the above steps for the other handle.
3. Position the water valve (16) connect the water way (21) as shown and assemble the locknut (15) and the water valve (12).

## 2

### Grid Drain Installation

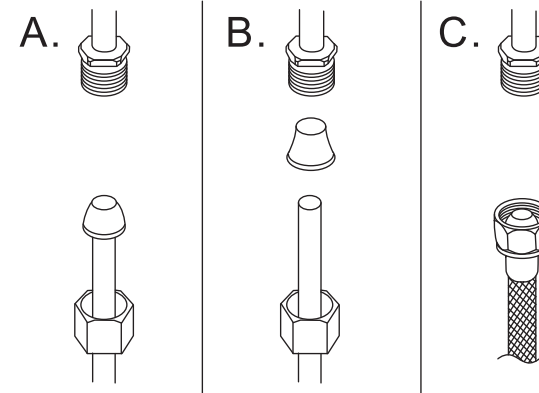
Instruction for product with drain option only



- A. Insert the drain body (30) from underneath the sink drain hole.
- B. Slide top rubber washer (31) and bottom rubber washer (32) on drain body up against bottom of sink. Tighten locknut (33) firmly against base for tight seal.

## 3

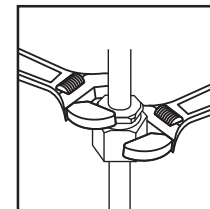
### Configuration



**Warning:**  
The supply valves and supply lines are not included.

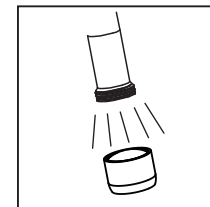
Connect to water supply lines with either:

- (A) 3/8" O.D. Copper tubing (ball nose risers with the coupling nuts or;
- (B) 3/8" Copper tubing (no ball) with supplied tube head interior connector or;
- (C) IPS faucet connectors(1/2")



#### Important:

Tighten connection with two wrenches to prevent damage to tube body. Be careful not to bend the stem as this will void the product warranty.



#### Important:

Remove the aerator and let both hot and cold water run for one minute. This will help clean any debris that might clog the system. Re-assemble aerator.

**Test system for leaks .**