



## LIMITED LIFETIME WARRANTY

Compass Manufacturing International warrants to the original consumer purchaser that the faucet be free from defects in material and workmanship for as long as the original consumer purchaser owns the home in which the faucet was first installed.

In the event that Freendo faucets are used in a Commercial Application, this warranty is limited for a period of 5 years, unless otherwise specifically stated in the catalog and/or price book.

Compass Manufacturing International will replace, free of charge, during the applicable warranty period, any part or finish that proves defective in material and/or workmanship under normal installation, use and service. This warranty shall not apply to goods which have been subject to accidents, negligence or improper installation. Compass Manufacturing International will not be liable for other damages or losses, including, but not limited to: labor charges and/or damages incurred in installation, repair or replacement as well as any other kind of loss or damage. Proof of purchase from the original consumer purchaser must be made available for all warranty claims.

Compass Manufacturing International recommends using a professional plumber for all installation and repair. Compass Manufacturing International will, at its discretion, provide replacement parts for installation by consumer for any parts that prove defective under normal usage and service with new or equivalent parts. Replacement parts may be obtained by emailing the address below, calling the number below or by writing to:

### Compass Manufacturing International

Freendo Product Service

6702 Enterprise Drive

Louisville, KY 40214

800.626.3525

[warranty@cmiproduct.com](mailto:warranty@cmiproduct.com)

Revised 4/28/16

[warranty@cmiproduct.com](mailto:warranty@cmiproduct.com)

© Compass Manufacturing International

800.626.3525



Model No. : 201-6608 Polished Chrome  
201-6609 Brushed Nickel *Spotless PVD*  
201-6610 Oil-Rubbed Bronze



**Two Handle Lavatory Faucet With Pop-up**  
3 Hole Installation, 4" Center-Set



## Helpful Information

### Helpful Tools

#### Tools:

Gather the necessary tools as shown below to complete the installation of this faucet. Some may not be needed depending on the model of faucet you are installing. Check with your local hardware store on the requirements of your installation situation.



Plumber's Putty



Flashlight



Basin Wrench



Safety Glasses



Screwdriver



Pliers



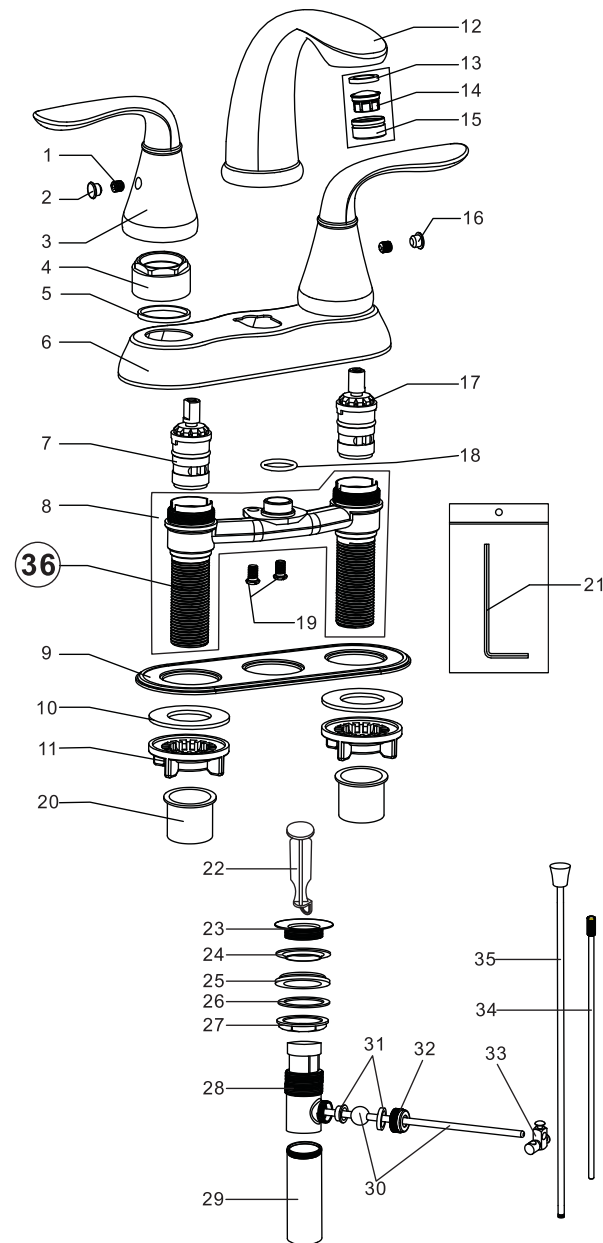
Channel Locks



Adjustable Wrench

## 5

## Parts Diagram / List

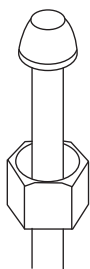
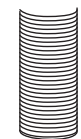


35	Lift Rod
34	Extend Rod
33	Fittings
32	Rod Guide Nut
31	Rod Ball Plastic Gasket
30	Horizontal Rod
29	Tailpiece
28	Drain Body
27	Locknut
26	Washer
25	Bottom Rubber Washer
24	Top Rubber Washer
23	Flange
22	Drain Stopper
21	Allen Key
20	Protective Sleeve
19	Screw
18	O-ring
17	Cartridge(Cold Water)
16	Index(Cold)
15	Aerator Collar
14	Aerator Core
13	Aerator Washer
12	Spout
11	Plastic Locknut
10	Washer
9	Putty Plate
8	Brazed Underbody
7	Cartridge(Hot Water)
6	Deck Plate
5	Washer
4	Cartridge Locknut
3	Handle
2	Index(Hot)
1	Set Screw
No.	Part Name

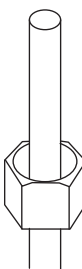
# 4

## Configuration

A. Faucet tailpiece



B. Faucet tailpiece



C. Faucet tailpiece



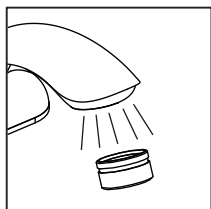
Connect to water supply lines with either:

- (A) 3/8" O.D. Copper tubing (ball nose risers with the coupling nuts or;
- (B) 3/8" Copper tubing (no ball) with supplied tube head interior connector or;
- (C) IPS faucet connectors (1/2")



**Warning:**

The supply valve and supply lines are not included.



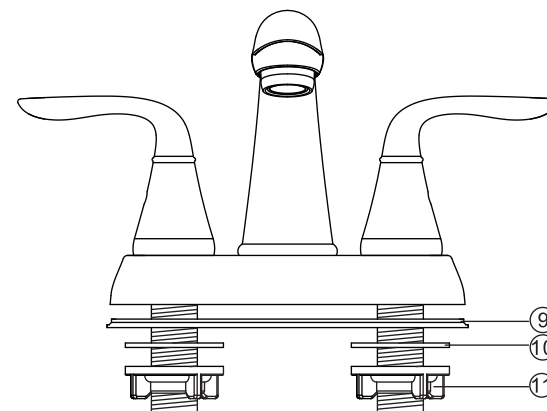
### Important:

Remove the aerator and let both hot and cold water run for one minute. To clear any line trash. This will help clean any debris that might clog the system. Re-assemble aerator.

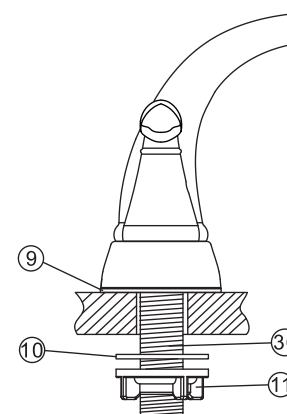
**Test system for leaks .**

# 1

## Preparation / Mounting



1. Shut off water supply and drain lines. Clean sink surface thoroughly. Make sure mounting area is clean and dry.
2. Remove the plastic locknut ⑪ and washer ⑩ from faucet. Don't remove the putty plate ⑨ from faucet.

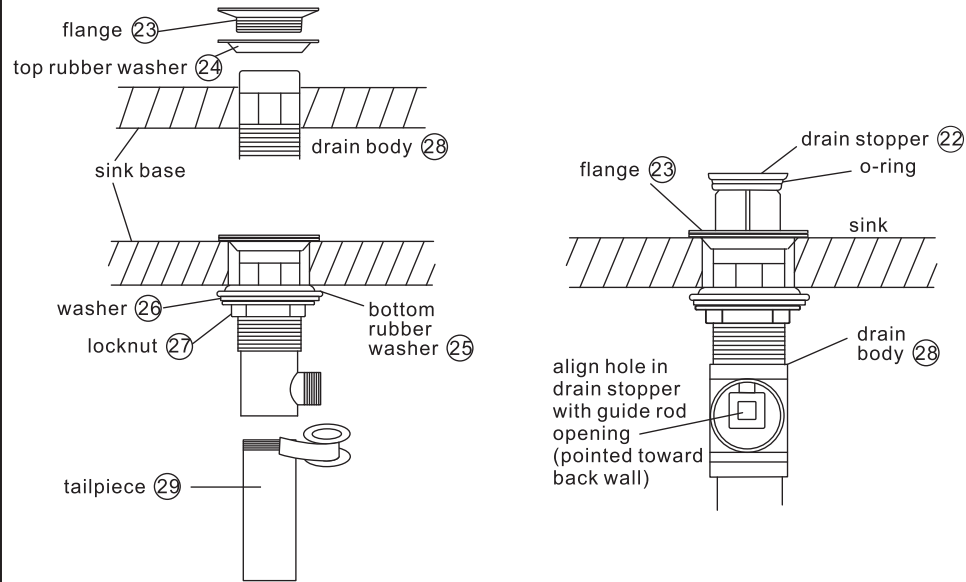


3. Position the faucet on the countertop with putty plate ⑨. Replace the washer ⑩ and plastic locknuts ⑪ on the faucet tailpiece ③⑥ and tighten the plastic locknuts ⑪ by hand.

## 2

### Pop-up Installation

Instruction for product with drain option only

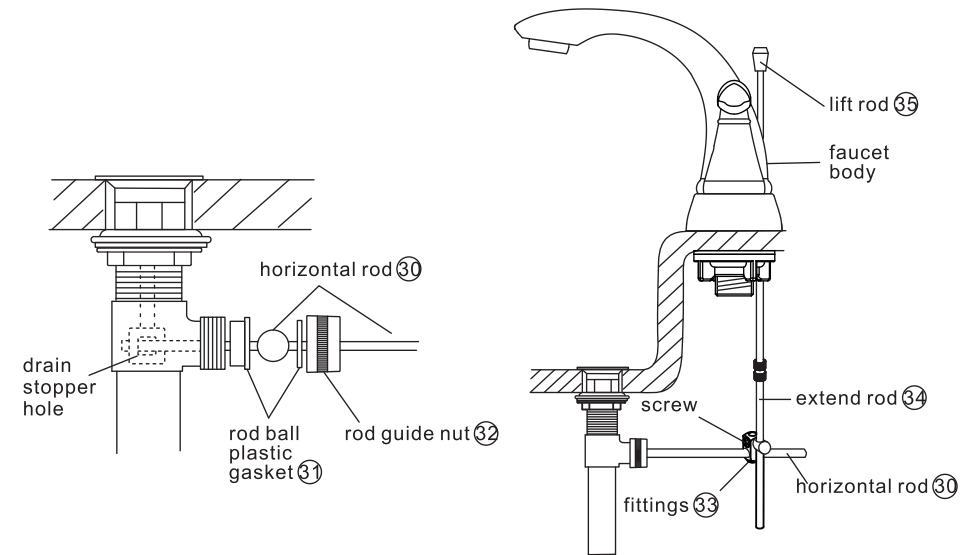


- Remove pop-up drain stopper (22) and flange (23) with top rubber washer (24) for pop-up assembly.
  - Insert drain body from underneath of sink drain hole. Replace flange (23) and top rubber washer (24) back to drain body (28). Tighten flange as far as possible.
  - Slide bottom rubber washer (25) on drain body up against bottom of sink. Tighten washer (26) and locknut (27) firmly against base for tight seal.
  - Remove tailpiece (29) from drain body (28), add Teflon tape, replace tailpiece (29).
- Replace pop-up drain stopper (22) to drain body (28) with o-ring in place, and align stopper hole with guide rod opening.

## 3

### Pop-up Installation

Instruction for product with drain option only



- Remove rod guide nut (32) and rod ball plastic gasket (31).
  - Insert horizontal rod (30) into drain body (28) and through hole in drain stopper (22).
  - Replace rod guide nut (32) with rod ball plastic gasket (31) and tighten it.
- Insert lift rod (35) through hole on faucet body.
  - Connect extend rod (34) to lift rod (35). Attach horizontal rod (30) to extend rod (34) using fittings (33), tighten screw.