



LIMITED LIFETIME WARRANTY

Compass Manufacturing International warrants to the original consumer purchaser that the faucet be free from defects in material and workmanship for as long as the original consumer purchaser owns the home in which the faucet was first installed.

In the event that Freendo faucets are used in a Commercial Application, this warranty is limited for a period of 5 years, unless otherwise specifically stated in the catalog and/or price book.

Compass Manufacturing International will replace, free of charge, during the applicable warranty period, any part or finish that proves defective in material and/or workmanship under normal installation, use and service. This warranty shall not apply to goods which have been subject to accidents, negligence or improper installation. Compass Manufacturing International will not be liable for other damages or losses, including, but not limited to: labor charges and/or damages incurred in installation, repair or replacement as well as any other kind of loss or damage. Proof of purchase from the original consumer purchaser must be made available for all warranty claims.

Compass Manufacturing International recommends using a professional plumber for all installation and repair. Compass Manufacturing International will, at its discretion, provide replacement parts for installation by consumer for any parts that prove defective under normal usage and service with new or equivalent parts. Replacement parts may be obtained by emailing the address below, calling the number below or by writing to:

Compass Manufacturing International

Freendo Product Service

6702 Enterprise Drive

Louisville, KY 40214

800.626.3525

warranty@cmiproduct.com

Revised 06/01/16

warranty@cmiproduct.com

© Compass Manufacturing International

800.626.3525



Model No. : 211-6620 Polished Chrome
211-6621 Brushed Nickel *Spotless PVD*
211-6622 Oil-Rubbed Bronze



4PCS Roman Tub With Hand-held Shower
4 Holes Installation



Helpful Information

Helpful Tools

Tools:

Gather the necessary tools as shown below to complete the installation of this faucet. Some may not be needed depending on the model of faucet you are installing. Check with your local hardware store on the requirements of your installation situation.



Plumber's Putty



Flashlight



Basin Wrench



Safety Glasses



Screwdriver



Pliers



Channel Locks



Adjustable Wrench

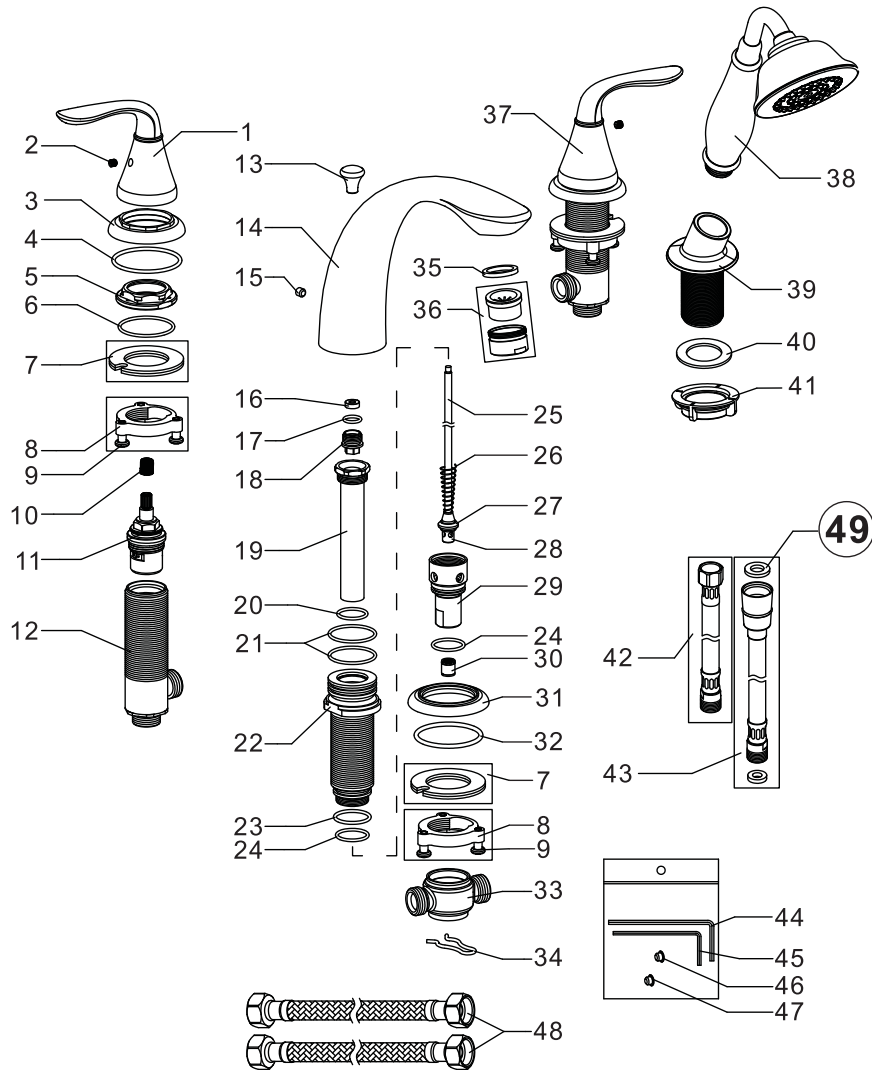
5

Parts List

24	O-ring	48	Connect Hose
23	O-ring	47	Index(Cold)
22	Shank	46	Index(Hot)
21	O-ring	45	Allen Key
20	O-ring	44	Allen Key
19	Diverter Tube	43	Pull-out Hose
18	Adapter	42	Connect Hose
17	O-ring	41	Plastic Locknut
16	Sealing Ring	40	Washer
15	Set Screw	39	Shower Holder
14	Spout	38	Hand-Held Shower
13	Knob	37	Cartridge(Cold Water)
12	Brass Valve Body	36	Aerator
11	Cartridge(Hot Water)	35	Aerator Washer
10	Handle Adapter	34	Clip
9	Screw	33	Spout Brass Tee
8	Locknut	32	O-ring
7	Clamp	31	Spout Flange
6	O-ring	30	Check Valve
5	Cartridge Locknut	29	Diverter Cover
4	O-ring	28	Diverter Core
3	Handle Flange	27	Washer
2	Set Screw	26	Diverter Spring
1	Handle	25	Lift Rod
No.	Part Name	No.	Part Name

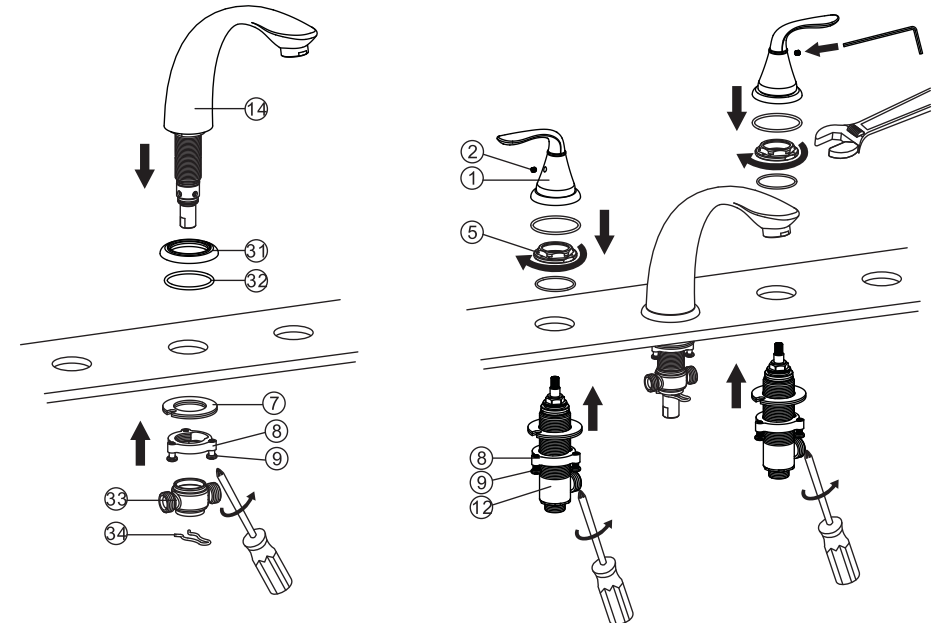
4

Parts Diagram



1

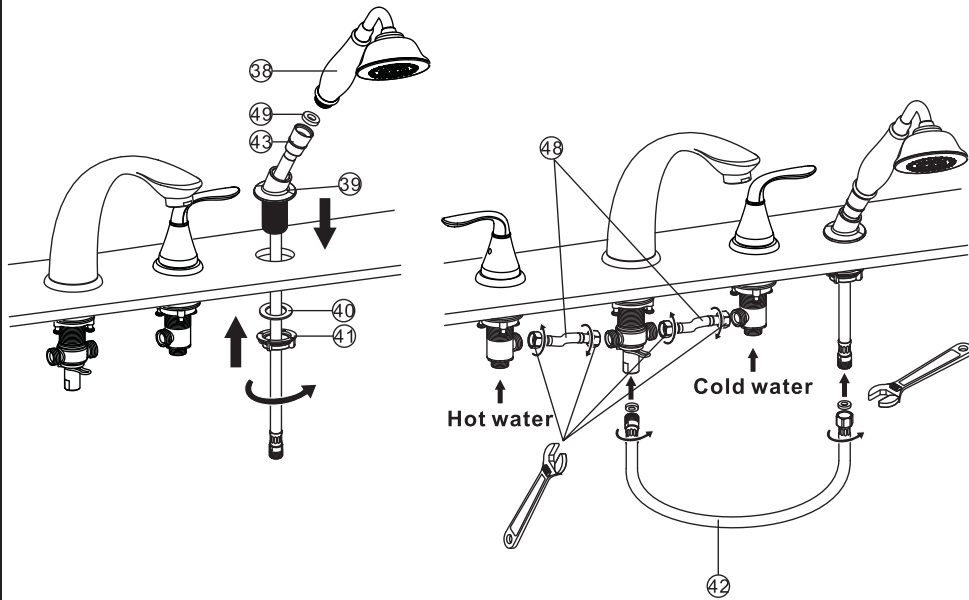
Faucet Installation



1. Shut off water supply and drain lines. Clean sink surface thoroughly. Make sure mounting area is clean and dry.
2. Position spout (14), spout flange (31) and O-ring (32) on countertop. From underneath the countertop, assemble clamp (7), locknut (8) and screw (9), and tighten with the screwdriver (**But do not over tighten**). Then connect the spout brass tee (33) to the spout by using the clip (34).
3. Position the brass valve body (12) as shown and fix it with cartridge locknut (5), then tighten the locknut (8) by hand and secure the screws (9) by screwdriver. Assemble the handle (1) and fix it with set screw (2). Repeat the above steps for the other handle.

2

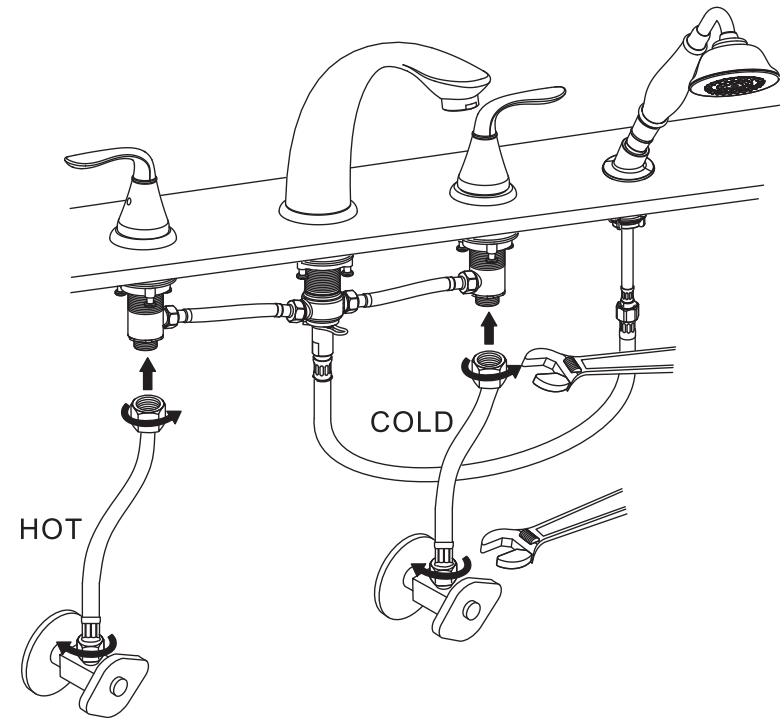
Faucet Installation



4. Position the shower holder (39) and secure it with washer (40) and plastic locknut (41). Connect the pull-out hose (43) to hand-held shower (38). **Caution: DON'T FORGET THE O-RING (49) BETWEEN THE HAND-HELD SHOWER (38) AND PULL-OUT HOSE (43).**
5. Connect the connect hoses (48) and (42) as shown and tighten them with adjustable wrench.

3

Configuration



Assemble Hot and Cold faucet supply lines.
CAUTION: DON'T OVER TIGHTEN THE SUPPLY LINES. OTHERWISE IT MIGHT DAMAGE THE WASHERS AND NUTS OF SUPPLY LINES AND CAUSE LEAK.



Warning:
 The supply valves and supply lines are not included.