

Casmir - Single Handle Pressure Balanced Tub & Shower Set

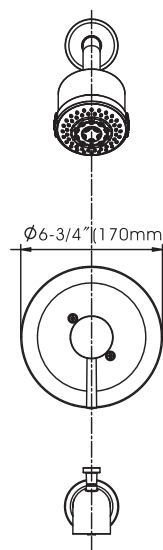
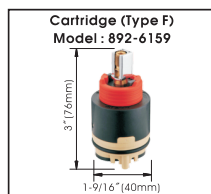
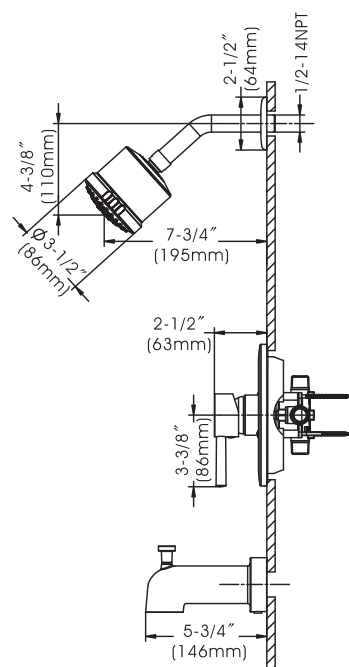


- * Pressure Balanced Valve with Integral Stops & Ceramic Disc Cartridge (Type F)
- * Solid Brass Waterway Construction with 1/2" - 14NPT Connection
- * 5-3/4" Zinc Die Cast Diverter Tub Spout
- * 3-1/2" Six Function Plastic Shower Head with Stainless Steel Shower Arm and Escutcheon
- * Shower Head Flow Rate: 1.5 GPM (5.7 L/MIN) MAX @ 80PSI
- * Tub Spout Flow Rate: 6.5 GPM (24.7 L/MIN) MAX @ 80PSI
- * 100% Pressure System Tested
- * Contractor Pack Available
- * Lifetime Limited Warranty; 5 year warranty from date of purchase for Commercial use.

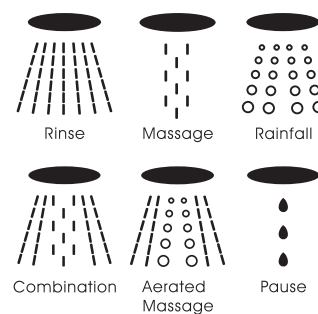
Project / Job Name	
Architect / Engineer	
Contractor	
Model	
Quantity	

Model No. :

☐ 192-6486 (CH) (Shown Model)
 ☐ 192-6487 (BN Spotless PVD)
 ☐ 192-7233 (MG)
 ☐ 192-7234 (MB)



Shower Head Functions :



Product Compliance:

- ASME A112.18.1 / CSA B125.1
- ANSI A117.1 (ADA)
- ASSE 1016

Casmir - Single Handle Pressure Balanced Tub & Shower Set

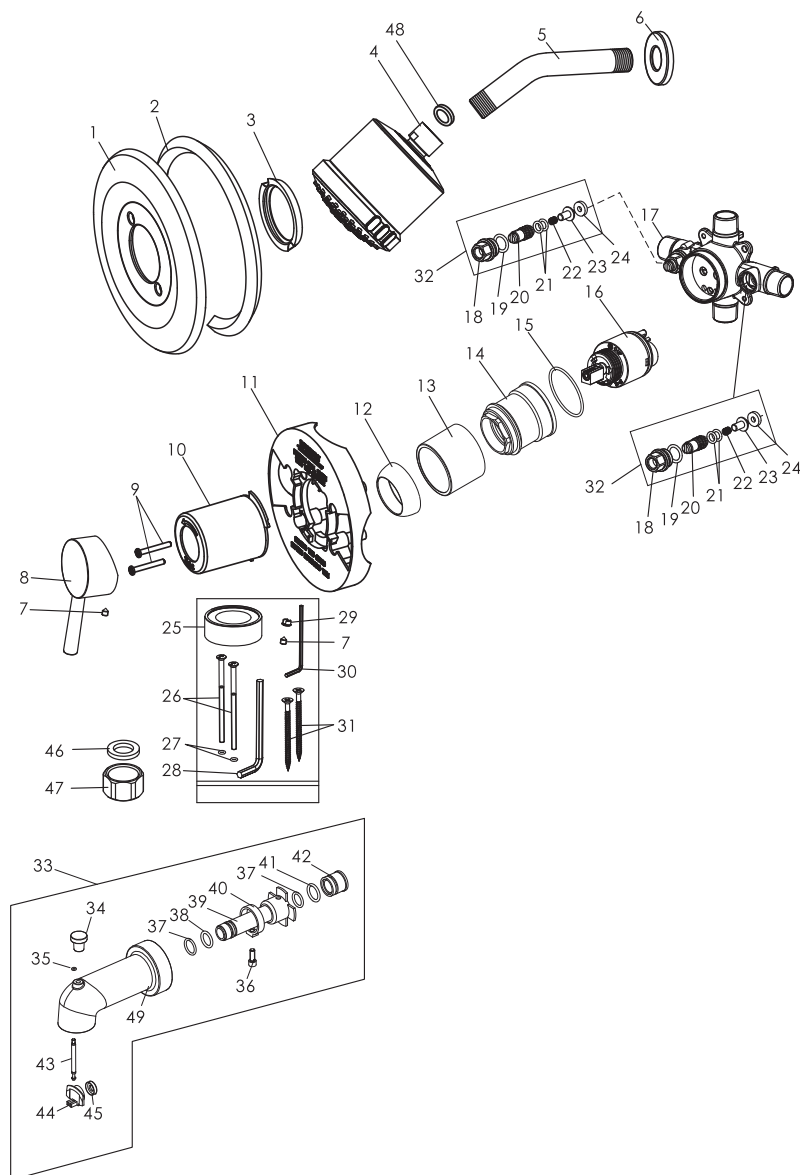
Model No. :

192-6486 (Polished Chrome)

192-6487 (Brushed Nickel **Spotless PVD**)

192-7233 (Matte Gold)

192-7234 (Matte Black)



Cartridge (Type F)
Model : 892-6159



No.	Part Name	Material
1	Escutcheon	Stainless Steel
2	Escutcheon Gasket	Rubber
3	Sealing Ring	Sponge
4	Shower Head	Plastic
5	Shower Arm	Stainless Steel
6	Shower Arm Flange	Stainless Steel
7	Set Screw	Stainless Steel
8	Handle	Zinc
9	Screws	Stainless Steel
10	Protective Sleeve	Plastic
11	Plaster Guard	Plastic
12	Trim Cap	Brass
13	Cartridge Sleeve	Brass
14	Cartridge Lock Nut	Zinc
15	O-ring	Rubber
16	Cartridge	Ceramic
17	Valve Body	Brass
18	Adjuster Seat	Brass
19	O-ring	Rubber
20	Adjuster	Brass
21	O-rings	Rubber
22	Spring	Stainless Steel
23	Stopper	Brass
24	Sealing Washer	Rubber
25	Teflon Tape	Stainless Steel
26	Screws	Stainless Steel
27	O-rings	Rubber
28	Large Allen Wrench	Steel
29	Index	Plastic
30	Small Allen Wrench	Steel
31	Screws	Stainless Steel
32	Stop Valve	Rubber+Brass+Stainless Steel
33	Spout Assembly	Zinc+Brass+Rubber+Stainless Steel+Plastic
34	Knob	Zinc
35	O-ring	Rubber
36	Set Screw	Stainless Steel
37	O-ring	Rubber
38	O-ring	Rubber
39	Plastic Core	Plastic
40	Ring	Zinc
41	O-ring	Rubber
42	Core Cover	Plastic
43	Pulling Core	Brass
44	Sealing Plate	Plastic
45	Washer	Rubber
46	Washer	Rubber
47	End Cap	Brass
48	Washer	Rubber
49	Spout	Zinc

Technical Support: warranty@cmipproduct.com
Hour of Operation: Mon - Fri 8:30 a.m - 5:00 p.m. EST