

## Cardania - Single Handle Vessel Faucet

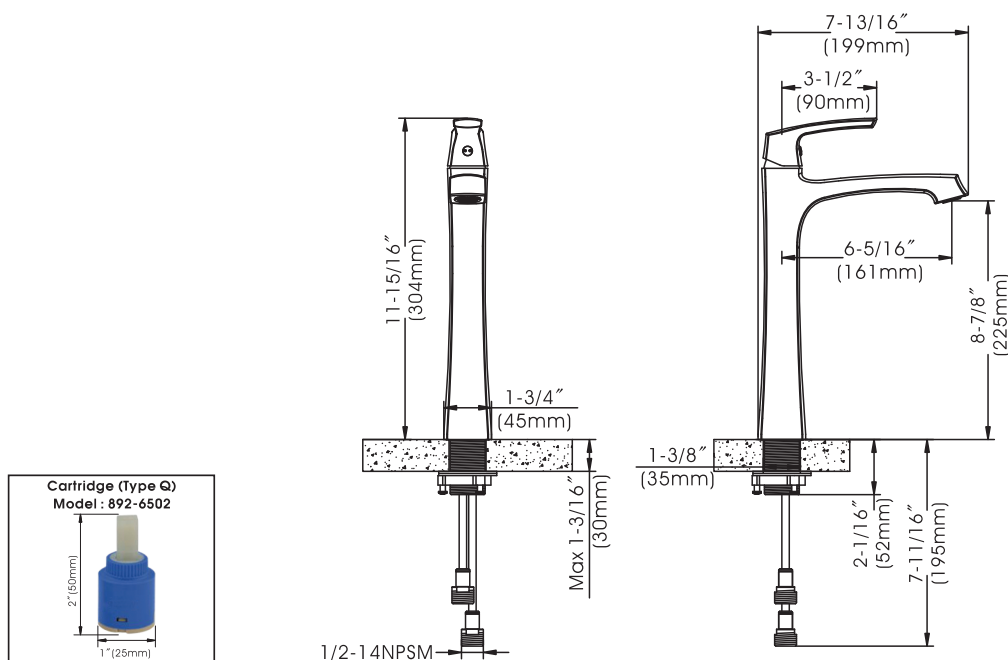


- \* Single Hole Installation
- \* Includes a Unique Push Down Pop-up Drain that Works for Both Overflow and No Overflow Bathroom Sinks
- \* 8-7/8" High and 6-5/16" Long One Piece Solid Cast Brass Spout, Zinc Handle, Brass Body
- \* Brass and Copper Waterway Construction with 1/2" -14 NPSM Connection
- \* Premium Grade Ceramic Cartridge (Type Q)
- \* Flow Rate: 1.2GPM (4.5L/MIN) MAX @ 60PSI
- \* 100% Pressure System Tested
- \* Lifetime Limited Warranty; 5 year warranty from date of purchase for Commercial use

Project / Job Name	
Architect / Engineer	
Contractor	
Model	
Quantity	

### Model No. :

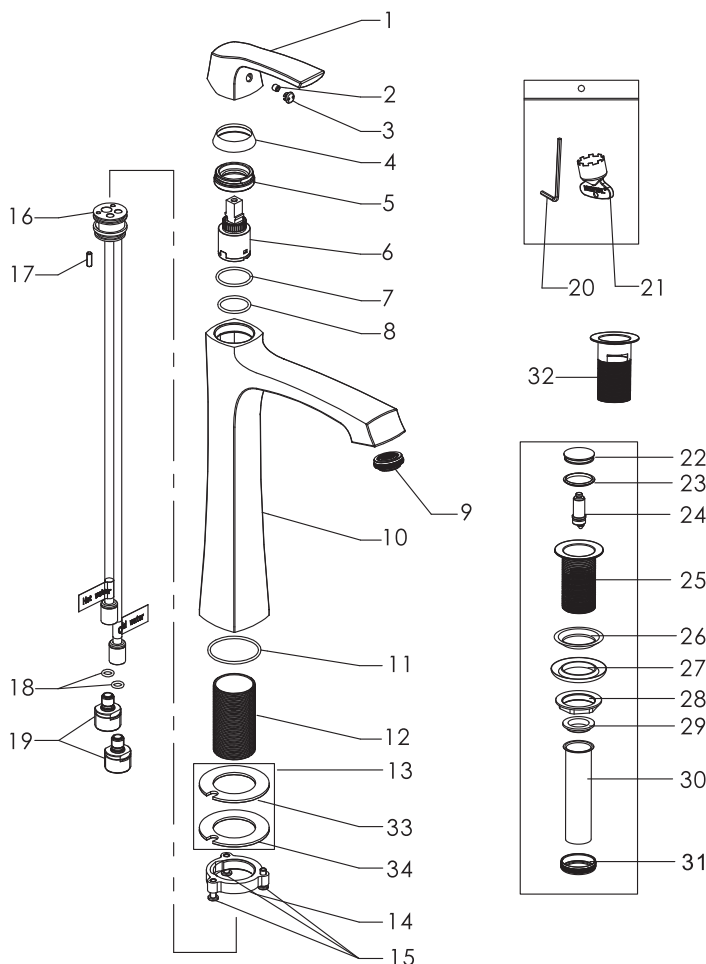
☐ 192-6410 (CH) ☐ 192-6411 (BN SpotlessPVD) ☐ 192-6412 (ORB) ☐ 192-7154(MG) ☐ 192-7155(MB)  
(Shown Model)



#### Product Compliance:

- ASME A112.18.1 / CSA B125.1
- NSF 61 - Section 9
- NSF 372 (Low Lead Content)
- ANSI A117.1 (ADA)
- EPA - Water Sense

# Cardania - Single Handle Vessel Faucet



## Model No. :

192-6410 (Polished Chrome)

192-6411 (Brushed Nickel **Spotless PVD**)

192-6412 (Oil-Rubbed Bronze)

192-7154 (Matte Gold)

192-7155 (Matte Black)

No.	Part Name	Material
1	Handle	Zinc
2	Set Screw	Stainless Steel
3	Index	Plastic
4	Trim Cap	Brass
5	Lock Nut	Brass
6	Cartridge	Ceramic
7	O-ring	Rubber
8	O-ring	Rubber
9	Aerator	Plastic
10	Body	Brass
11	O-ring	Rubber
12	Threaded Shank	Stainless Steel
13	Gasket Assembly	Rubber
14	Lock Nut	Zinc
15	Screws	Stainless Steel
16	Waterway	Brass & Copper
17	Set Screw	Stainless Steel
18	O-rings	Rubber
19	Adapters	Brass
20	Allen Wrench	Steel
21	Aerator Wrench	Plastic
22	Cover	Brass
23	Washer	Rubber
24	Stopper Core	Brass
25	Stopper Housing (Without Overflow Hole)	Brass
26	Washer	Rubber
27	Washer	Rubber
28	Lock Nut	Zinc
29	Washer	Rubber
30	Outlet Pipe	Brass
31	Nut	Brass
32	Stopper Housing (With Overflow Hole)	Brass
33	Rubber Washer	Rubber
34	Metal Washer	Stainless Steel

### Cartridge (Type Q) Model : 892-6502



Technical Support: [warranty@cmiproduct.com](mailto:warranty@cmiproduct.com)  
Hour of Operation: Mon - Fri 8:30 a.m - 5:00 p.m. EST