

Grand - Single Handle Pressure Balanced Tub & Shower Set



- * Anti-Scald Pressure Balanced Valve with Integral Stops & Ceramic Cartridge (Type F)
- * Solid Brass Waterway Construction with 1/2" -14 NPT Connection
- * 5-7/8" Six Function Plastic Shower Head with Zinc Handle
- * Stainless Steel Shower Arm
- * Stainless Steel Escutcheon
- * 5-1/4" Zinc Die Cast Diverter Tub Spout
- * Shower Head Flow Rate: 1.5GPM (5.7L/MIN) MAX @ 80PSI
- * Tub Spout Flow Rate: 6.5GPM (24.7L/MIN) MAX @ 80PSI
- * 100% Pressure System Tested
- * Lifetime Limited Warranty; 5 year Warranty from Date of Purchase for Commercial Use

Project / Job Name	
Architect / Engineer	
Contractor	
Model	
Quantity	

Model No. :



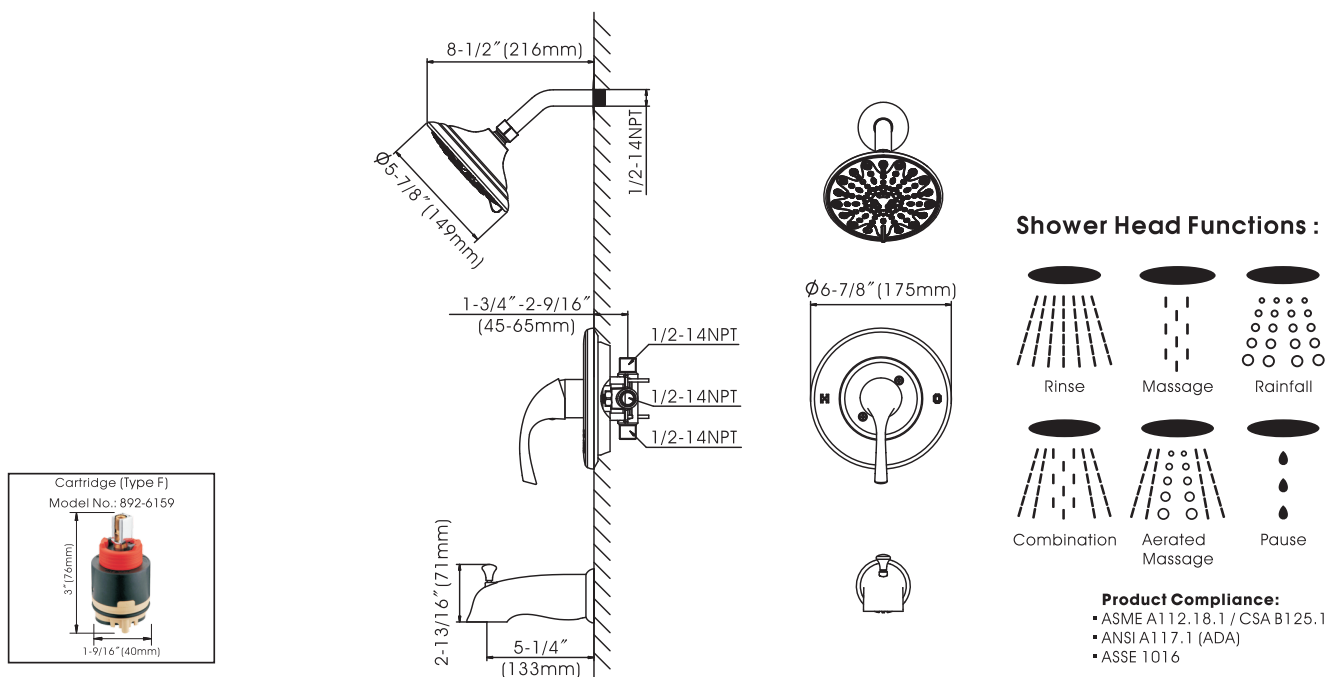
192-7383 (CH)
(Shown Model)



192-7384 (BN *Spotless PVD*)



192-7385 (ORB)



Compass Manufacturing International LLC

www.cmiproducf.com

6702 Enterprise Drive, Louisville, Kentucky 40214

Toll Free Number: 800-626-3525

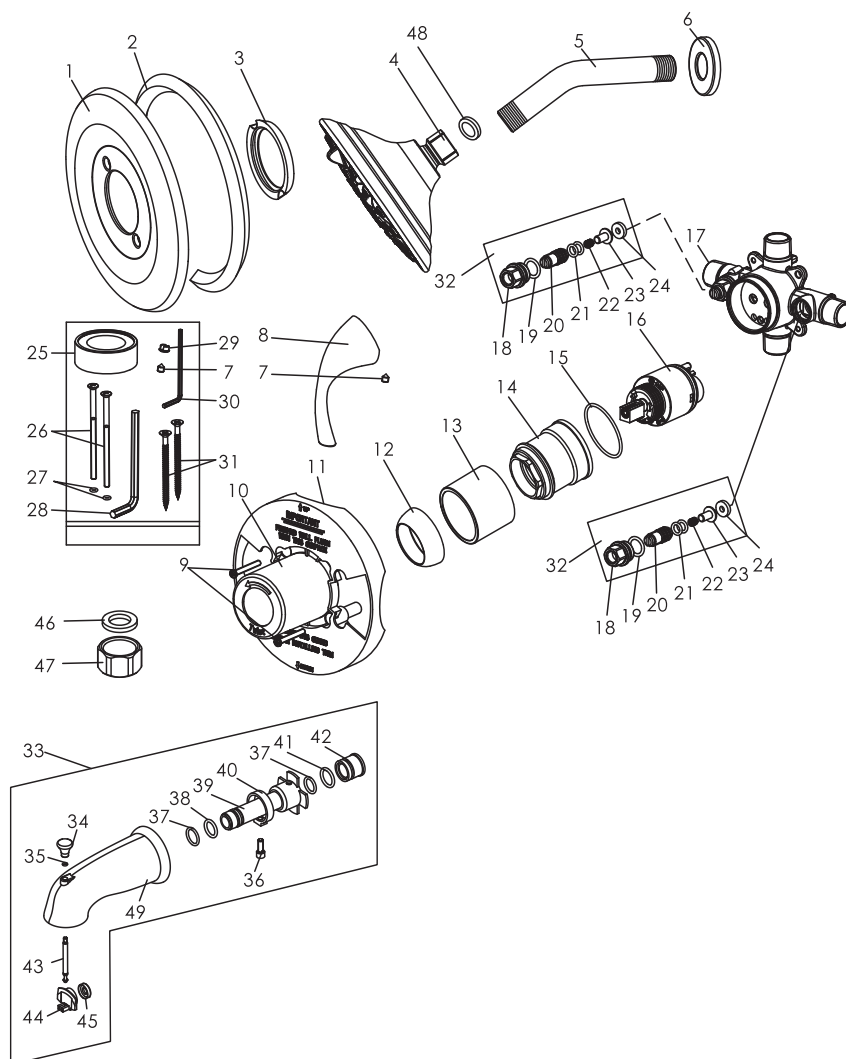
Grand - Single Handle Pressure Balanced Tub & Shower Set

Model No. :

192-7383 (Polished Chrome)

192-7384 (Brushed Nickel *Spotless PVD*)

192-7385 (Oil-Rubbed Bronze)



No.	Part Name	Material
1	Escutcheon	Stainless Steel
2	Escutcheon Gasket	Rubber
3	Sealing Ring	Rubber
4	Shower Head	Plastic
5	Shower Arm	Stainless Steel
6	Shower Arm Flange	Stainless Steel
7	Set Screw	Stainless Steel
8	Handle	Zinc
9	Screw	Stainless Steel
10	Protective Sleeve	Plastic
11	Plaster Guard	Plastic
12	Trim Cap	Brass
13	Cartridge Sleeve	Brass
14	Lock Nut	Zinc
15	O-ring	Rubber
16	Cartridge	Ceramic
17	Valve Body	Brass
18	Integral Stop Locknut	Brass
19	O-ring	Rubber
20	Adjuster	Brass
21	O-ring	Rubber
22	Spring	Stainless Steel
23	Stopper	Brass
24	Sealing Washer	Rubber
25	Teflon Tape	Plastic
26	Screw	Stainless Steel
27	O-ring	Rubber
28	Large Allen Wrench	Steel
29	Index	Plastic
30	Allen Wrench	Steel
31	Screw	Stainless Steel
32	Stop Valve	Stainless Steel+Rubber+Plastic+Brass
33	Spout Assembly	Stainless Steel+Zinc+Rubber+Plastic+Brass
34	Knob	Zinc
35	O-ring	Rubber
36	Screw	Stainless Steel
37	O-ring	Rubber
38	O-ring	Rubber
39	Plastic Core	Plastic
40	Ring	Plastic
41	O-ring	Rubber
42	Core Cover	Plastic
43	Pulling Core	Brass
44	Sealing Plate	Plastic
45	Washer	Rubber
46	Washer	Rubber
47	End Cap	Brass
48	Washer	Rubber
49	Spout	Zinc

Cartridge (Type F)
Model No.: 892-6159



Technical Support: warranty@cmiproduct.com
Hour of Operation: Mon - Fri 8:30 a.m - 5:00 p.m. EST