

## Aegean - Single Handle Pressure Balanced Tub & Shower Set

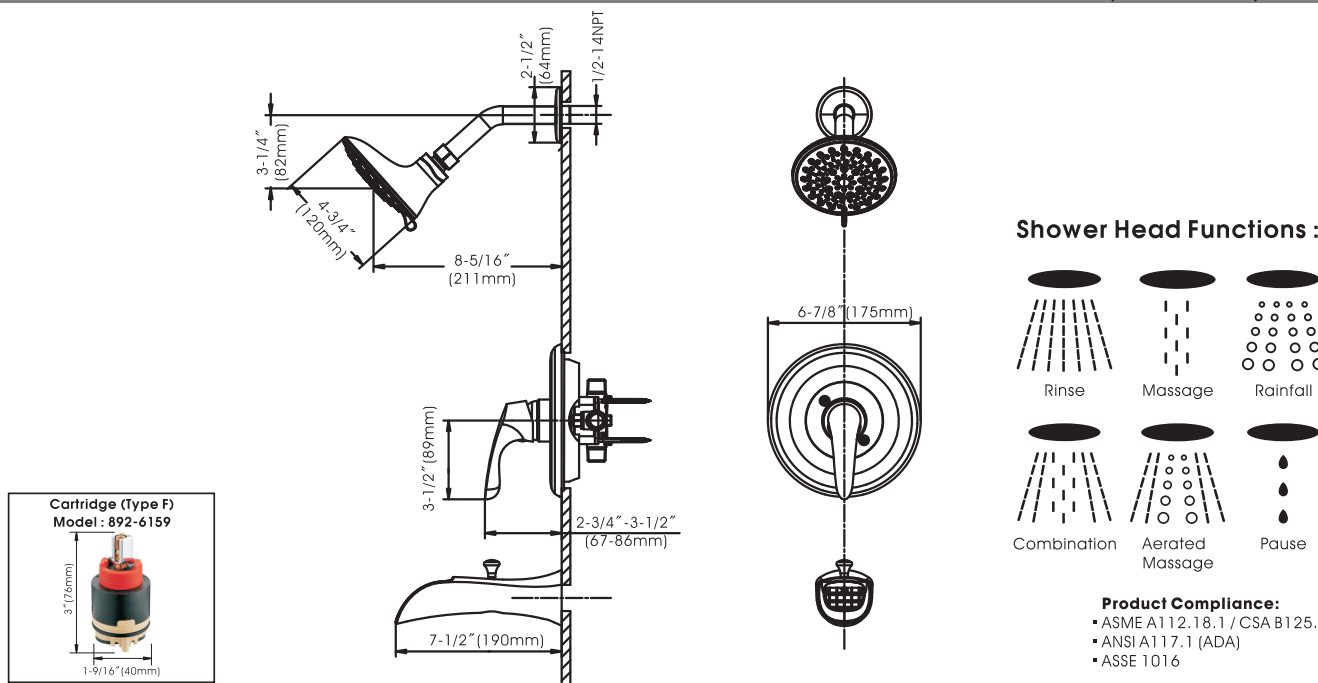


- \* Anti-Scald Pressure Balanced Valve with Integral Stops & Ceramic Cartridge (Type F)
- \* Solid Brass Waterway Construction with 1/2" -14 NPT Connection
- \* 7-1/2" Brass Die Cast Diverter Tub Spout
- \* 4-3/4" Six Function Plastic Shower Head with Stainless Steel Shower Arm and Escutcheon
- \* Shower Head Flow Rate: 1.5 GPM (5.7 L/MIN) MAX @ 80PSI
- \* Tub Spout Flow Rate: 6.5 GPM (24.7 L/MIN) MAX @ 80PSI
- \* 100% Pressure System Tested
- \* Lifetime Limited Warranty; 5 year Warranty from Date of Purchase for Commercial Use

Project / Job Name	
Architect / Engineer	
Contractor	
Model	
Quantity	

### Model No. :

☐ 192-6446 (CH)
 ☐ 192-6447 (BN **Spotless PVD**)
 ☐ 192-6448 (ORB)
 ☐ 192-7509 (MB) **(Shown Model)**



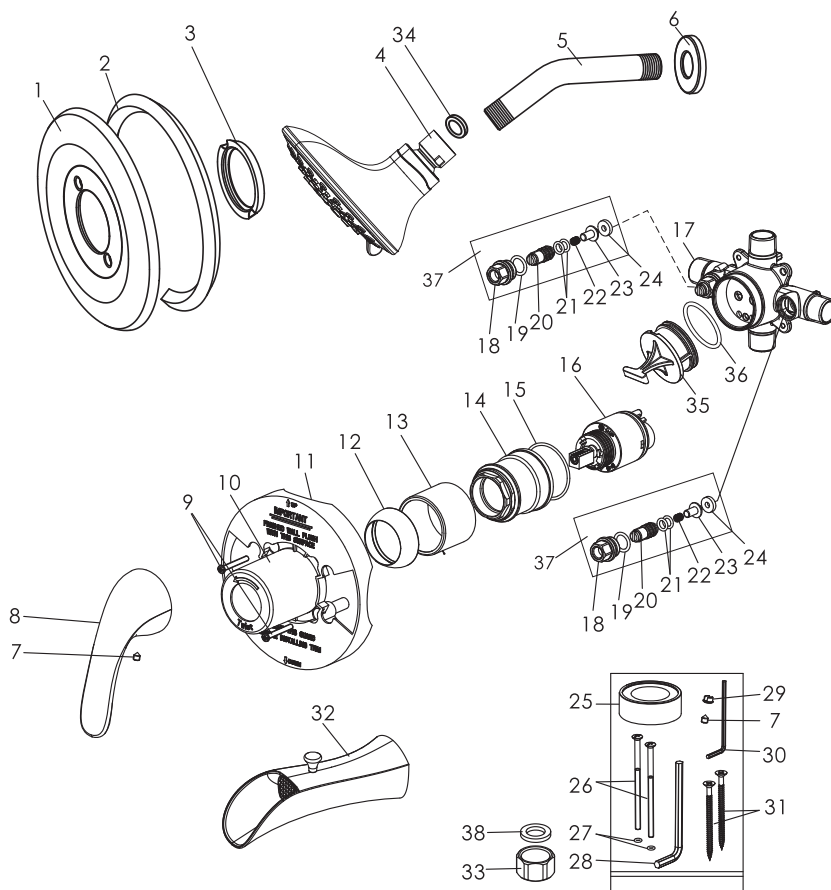
Compass Manufacturing International LLC

www.cmiproducf.com

6702 Enterprise Drive, Louisville, Kentucky 40214

Toll Free Number: 800-626-3525

## Aegean - Single Handle Pressure Balanced Tub & Shower Set



### Model No. :

192-6446 (Polished Chrome)

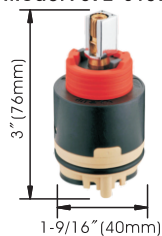
192-6447 (Brushed Nickel **Spotless PVD**)

192-6448 (Oil-Rubbed Bronze)

192-7509 (Matte Black)

No.	Part Name	Material
1	Escutcheon	Stainless Steel
2	Escutcheon Gasket	Rubber
3	Sealing Ring	Rubber
4	Shower Head	Plastic
5	Shower Arm	Stainless Steel
6	Shower Arm Flange	Stainless Steel
7	Set Screw	Stainless Steel
8	Handle	Zinc
9	Screw	Stainless Steel
10	Protective Sleeve	Plastic
11	Plaster Guard	Plastic
12	Trim Cap	Brass
13	Cartridge Sleeve	Brass
14	Cartridge Lock Nut	Zinc
15	O-ring	Rubber
16	Cartridge	Ceramic
17	Valve Body	Brass
18	Adjuster Seat	Stainless Steel
19	O-ring	Rubber
20	Adjuster	Brass
21	O-rings	Rubber
22	Spring	Stainless Steel
23	Stopper	Stainless Steel
24	Sealing Washer	Rubber
25	Teflon Tape	Plastic
26	Screws	Stainless Steel
27	O-rings	Rubber
28	Large Allen Wrench	Steel
29	Index	Plastic
30	Small Allen Wrench	Steel
31	Screws	Stainless Steel
32	Tub Spout	Brass
33	End Cap	Brass
34	Washer	Rubber
35	Test Plug	Plastic
36	O-ring	Rubber
37	Stop Valve	Stainless Steel+Brass+Rubber
38	Washer	Rubber

**Cartridge (Type F)**  
**Model : 892-6159**



Technical Support: [warranty@cmipproduct.com](mailto:warranty@cmipproduct.com)  
Hour of Operation: Mon - Fri 8:30 a.m - 5:00 p.m. EST