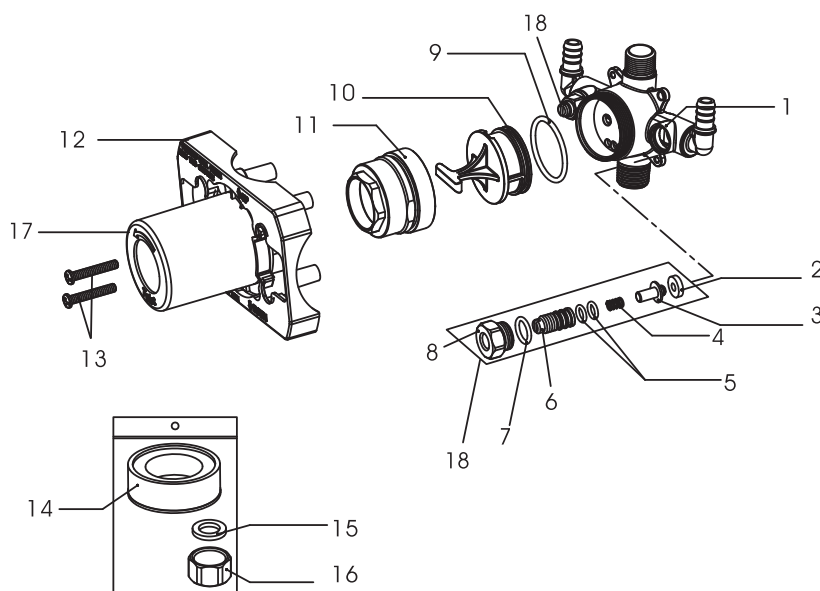


## Contractor Valve with Crimp PEX Connection Facing Up Type B - F1807



### • Model No. : 192-8195

- \* Brass Valve Body Only
- \* Requires Anti-Scald Pressure Balanced Ceramic Cartridge (Type F) Sold Separately in Trim Pack
- \* Integral Stops
- \* 3/4" PEX crimp inlets connections and 1/2" Universal outlets (Sweat) with Male NPT threads
- \* Includes brass plug for Shower only
- \* Includes pressure test kit



| NO. | Part Name          |
|-----|--------------------|
| 1   | Valve Body         |
| 2   | Sealing Washer     |
| 3   | Stopper            |
| 4   | Spring             |
| 5   | O-rings            |
| 6   | Adjuster           |
| 7   | O-ring             |
| 8   | Adjuster Seat      |
| 9   | O-ring             |
| 10  | Test Plug          |
| 11  | Cartridge Lock Nut |
| 12  | Plaster Guard      |
| 13  | Screws             |
| 14  | Teflon Tape        |
| 15  | Washer             |
| 16  | End Cap            |
| 17  | Protective Sleeve  |
| 18  | Integral Stops     |

**Product Compliance:**  
• ASME A112.18.1 / CSA B125.1  
• ASSE 1016