

Majestic - Roman Tub with Hand-Held Shower



- * 5-3/16" High and 6-11/16" Long One Piece Solid Cast Brass Spout
- * 3-7/16" High Zinc Handles
- * Matching 3-1/4" Single Function Hand-Held Shower
- * 72" Flexible Stainless Steel Hose
- * 1/4 Turn Premium Grade High Flow rate Ceramic Cartridges (Type K)
- * Spout Flow Rate: 18GPM (68.1L/MIN) Max @ 80PSI
- * Hand-Held Shower Flow Rate: 2.5GPM (9.5L/MIN) Max @ 80PSI
- * 100% Pressure System Tested
- * Lifetime Limited Warranty; 5 year Warranty from Date of Purchase for Commercial Use

Project / Job Name

Architect / Engineer

Contractor

Model

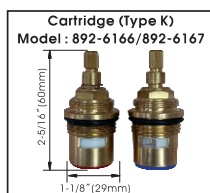
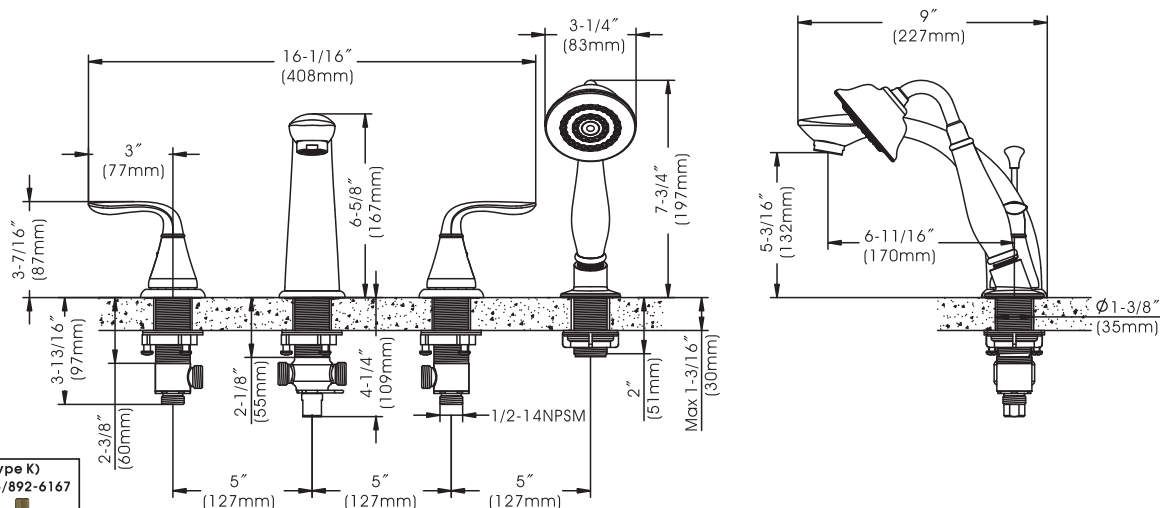
Quantity

Model No. :

☐ 211-6620 (CH)

☐ 211-6621 (BN **Spotless PVD**)

☐ 211-6622 (ORB)
(Shown Model)



Product Compliance:

- ASME A112.18.1 / CSA B125.1
- ANSI A117.1 (ADA)

Compass Manufacturing International LLC

www.cmiproduet.com

6702 Enterprise Drive, Louisville, Kentucky 40214

Toll Free Number: 800-626-3525

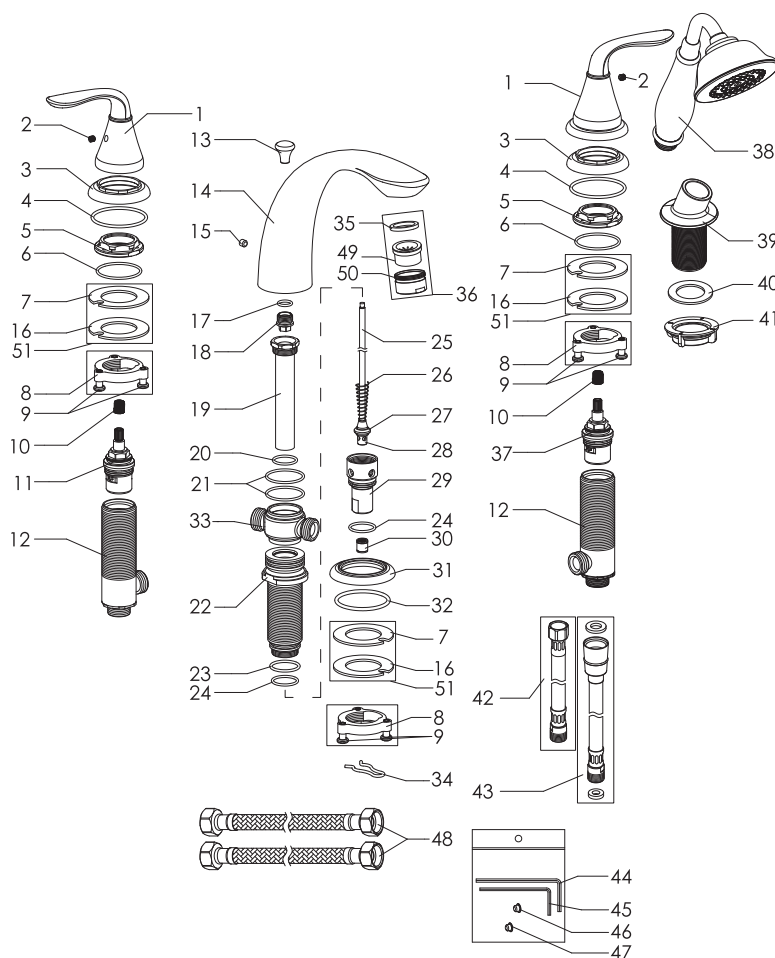
Majestic - Roman Tub with Hand-Held Shower

Model No. :

211-6620 (Polished Chrome)

211-6621 (Brushed Nickel **Spotless PVD**)

211-6622 (Oil-Rubbed Bronze)



No.	Part Name	Material
1	Handle	Zinc
2	Set Screw	Stainless Steel
3	Handle Base	Zinc
4	O-ring	Rubber
5	Cartridge Lock Nut	Zinc
6	O-ring	Rubber
7	Rubber Washer	Rubber
8	Lock Nut	Zinc
9	Screws	Stainless Steel
10	Handle Adapter	Plastic
11	Cartridge (Hot)	Brass
12	Brass Valve Body	Brass
13	Knob	Zinc
14	Spout	Brass
15	Set Screw	Stainless Steel
16	Metal Washer	Stainless Steel
17	O-ring	Rubber
18	Adapter	Brass
19	Diverter Tube	Brass
20	O-ring	Rubber
21	O-rings	Rubber
22	Shank	Brass
23	O-ring	Rubber
24	O-ring	Rubber
25	Diverter Lift Rod	Brass
26	Diverter Spring	Stainless Steel
27	Washer	Rubber
28	Diverter Core	Brass
29	Diverter Cover	Brass
30	Check Valve	Plastic
31	Spout Base	Zinc
32	O-ring	Rubber
33	Tee	Brass
34	Clip	Stainless Steel
35	Aerator Washer	Brass
36	Aerator Assembly	Plastic+Brass
37	Cartridge (Cold)	Brass
38	Hand-Held Shower	Plastic
39	Shower Holder	Plastic
40	Washer	Rubber
41	Lock Nut	Plastic
42	Connect Hose	Stainless Steel
43	Hand-Held Hose	Stainless Steel
44	Allen Wrench (Large)	Steel
45	Allen Wrench (Small)	Steel
46	Index (Red)	Stainless Steel
47	Index (Blue)	Plastic
48	Flexible Hose	Stainless Steel
49	Aerator Core	Plastic
50	Aerator Collar	Brass
51	Gasket Assembly	Rubber+Stainless Steel

Cartridge (Type K)
Model : 892-6166/892-6167



Technical Support: warranty@cmiproduct.com
Hour of Operation: Mon - Fri 8:30 a.m - 5:00 p.m. EST