



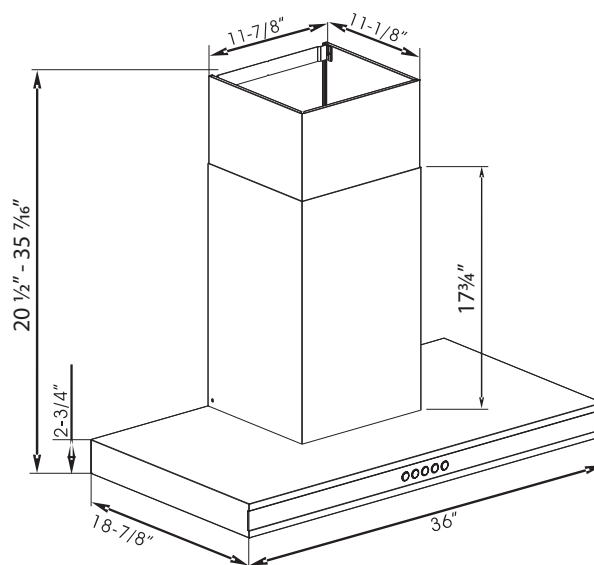
Cosmo 36SS 812-0613

Wall Mounted Kitchen Hood

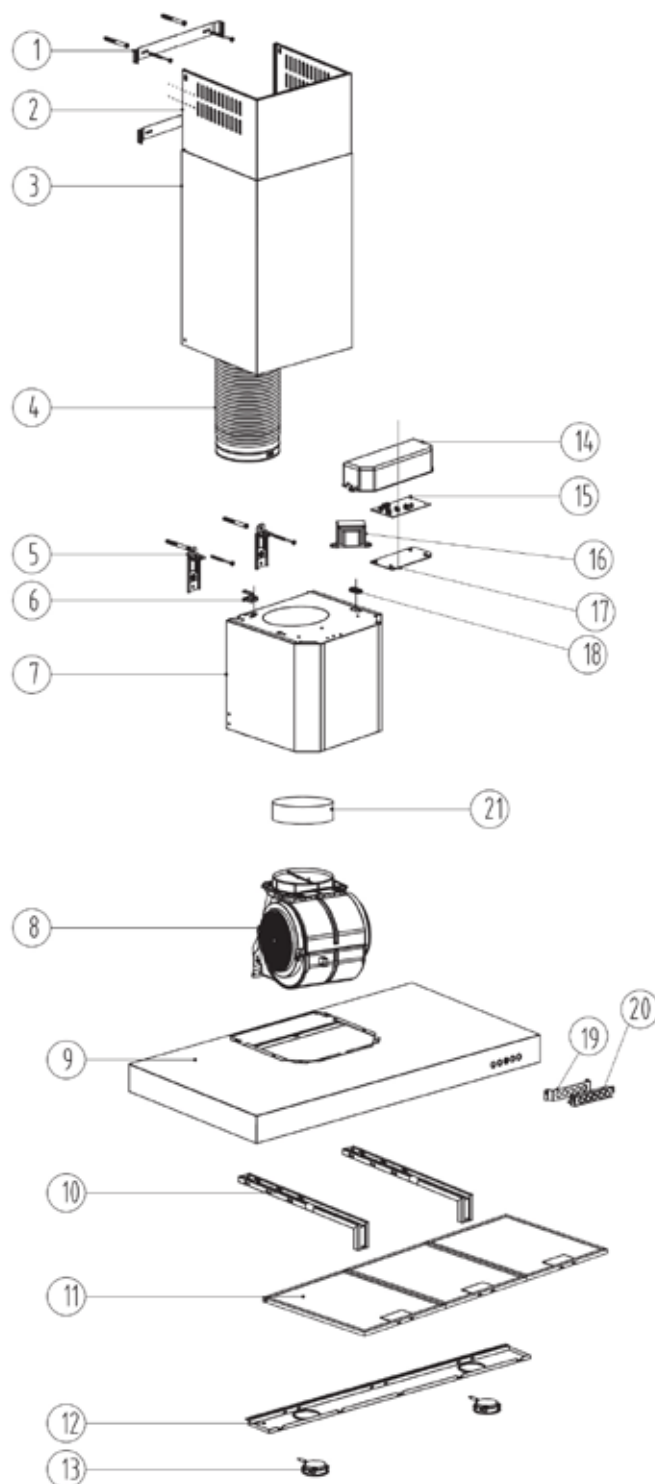
Width: 36"
Dimension: 36"W x 18⁷/₈"D x 20¹/₂" - 35⁷/₁₆"H
Light Type: 2 x 2W LED
Air Outlet: 6"
Finish: Satin Finish Stainless Steel
Motor: 150W with 110 plug
Voltage: 120V
Vent Pipe: 79" Adjustable Vent Pipe
Vent Type: Ducted or Recirculated
Airflow: 350 CFM
Noise Level: 65 dB

Features

Direct Vent or Recirculating
3 Fan Speeds
Electronic Switch
Low Noise Operation
Dishwasher Safe Aluminum Filter
Charcoal Filters Included for Recirculating



*Dimensions are nominal values and are subject to normal manufacturing/packaging tolerance and variation.



1	Shroud Bracket
2	Inner Shroud
3	Outer Shroud
4	Expandable Vent Pipe
5	Mounting Bracket
6	Electrical Wire Rubber Bushing
7	Metal Blower Assembly
8	Motor Assembly
9	Steel Frame
10	Steel Frame Brackets
11	Aluminum Filter
12	LED Light Bracket
13	LED Light Assembly
14	Circuit Board Cover
15	Circuit Board
16	Electrical Transformer
17	Circuit Board Bracket
18	Electrical Wire Clamp
19	Switch Bracket
20	Switch Assembly
21	Plastic Collar



Charcoal Filters (Set)
For Use With Recirculating Vent