



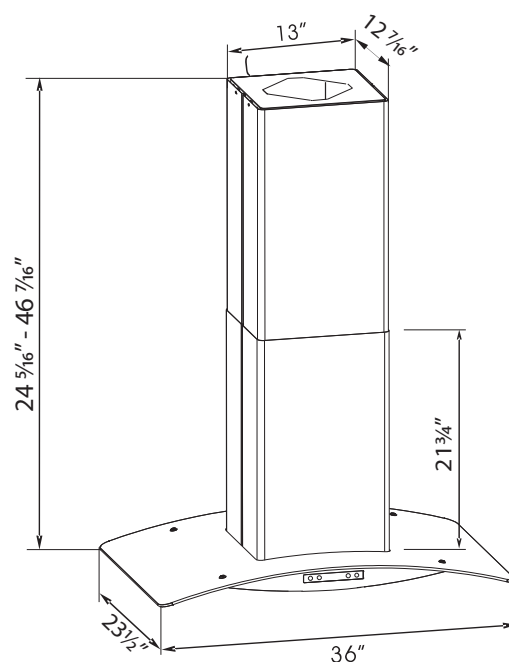
Vega 36SS 812-0616

Island Kitchen Hood

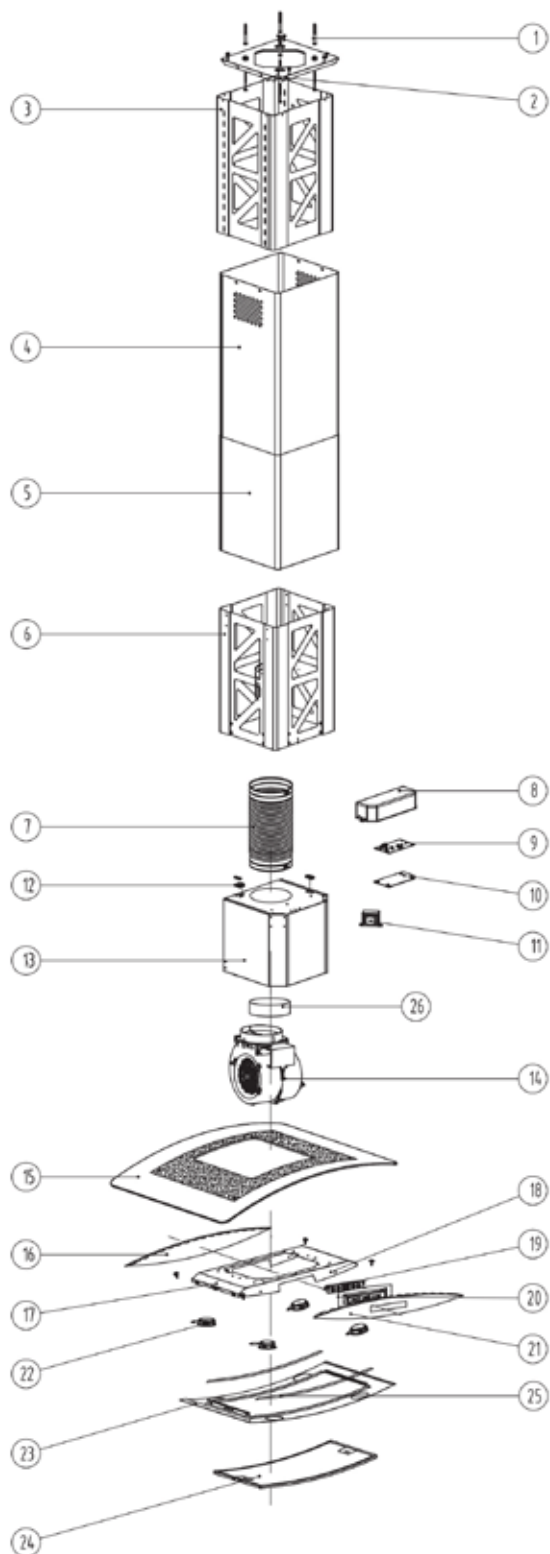
Width: 36"
Dimension: 36"W x 23½"D x 24⅝" - 46⅞"H
Light Type: 4 x 2W LED
Air Outlet: 6"
Finish: Satin Finish Stainless Steel and Tempered Glass
Motor: 315W with 110 plug
Voltage: 120V
Vent Pipe: 79" Adjustable Vent Pipe
Vent Type: Ducted or Recirculated
Airflow: 530 CFM
Noise Level: 72 dB

Features

Direct Vent or Recirculating
3 Fan Speeds
Low Noise Operation
Soft Touch Electronic Switch
Dishwasher Safe Aluminum Filter
Charcoal Filters Included for Recirculating



*Dimensions are nominal values and are subject to normal manufacturing/packaging tolerance and variation.



| | |
|----|---|
| 1 | Wall Anchor |
| 2 | Ceiling Bracket |
| 3 | Shroud Bracket |
| 4 | Inner Shroud |
| 5 | Outer Shroud |
| 6 | Inner Bottom Bracket |
| 7 | Expandable Vent Pipe |
| 8 | Circuit Board Cover |
| 9 | Circuit Board |
| 10 | Circuit Board Bracket |
| 11 | Electrical Transformer |
| 12 | Electrical Wire Rubber Bushing |
| 13 | Metal Blower Assembly |
| 14 | Motor Assembly |
| 15 | Main Glass |
| 16 | Rear Board for Steel Frame |
| 17 | Metal Frame |
| 18 | Switch Bracket |
| 19 | Switch Assembly |
| 20 | Switch |
| 21 | Front Panel |
| 22 | LED Light Assembly |
| 23 | Steel Frame with LED Light Socket Bracket |
| 24 | Aluminum Filter |
| 25 | Reinforced Metal Bar |
| 26 | Plastic Air Exit |



Charcoal Filters (Set)
For Use With Recirculating Vent